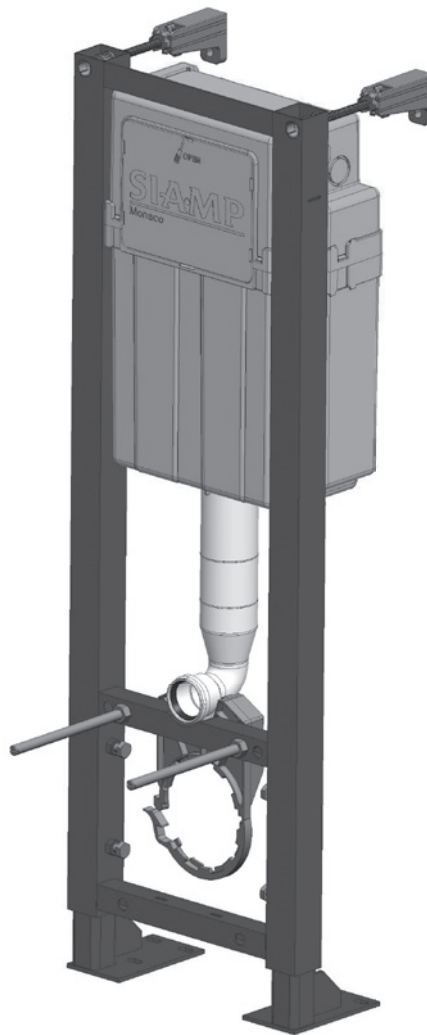


# INGENIO

Bâti-support WC / *WC support frame*

**100% AUTOPORTANT/APPLIQUE**

*/ SELF SUPPORTING FRAME*



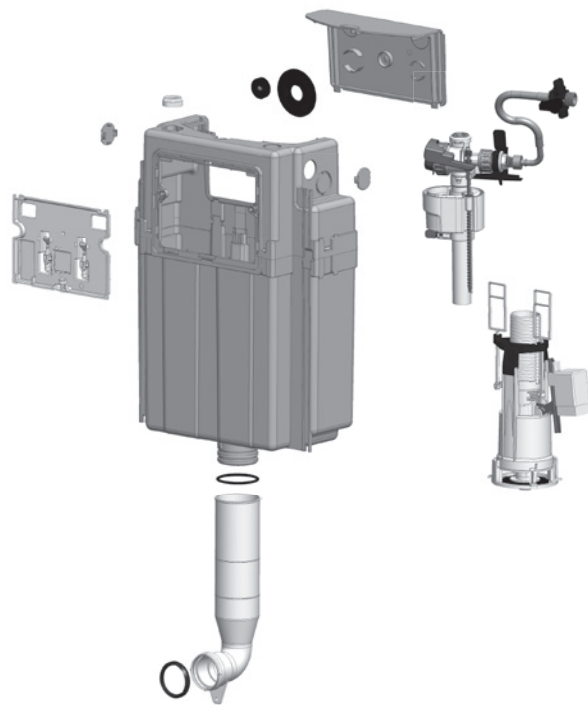
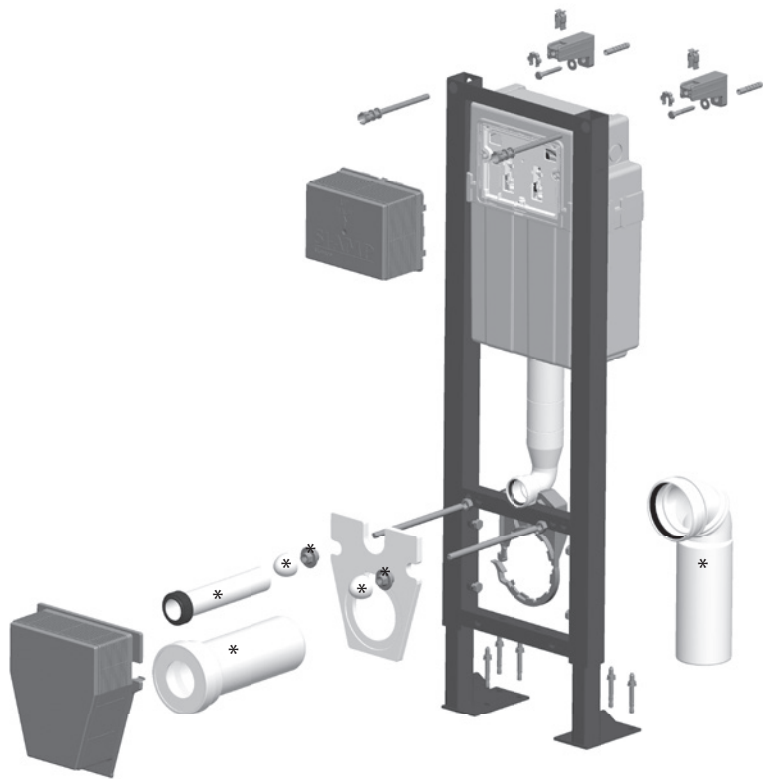
# SIAMP

Monaco



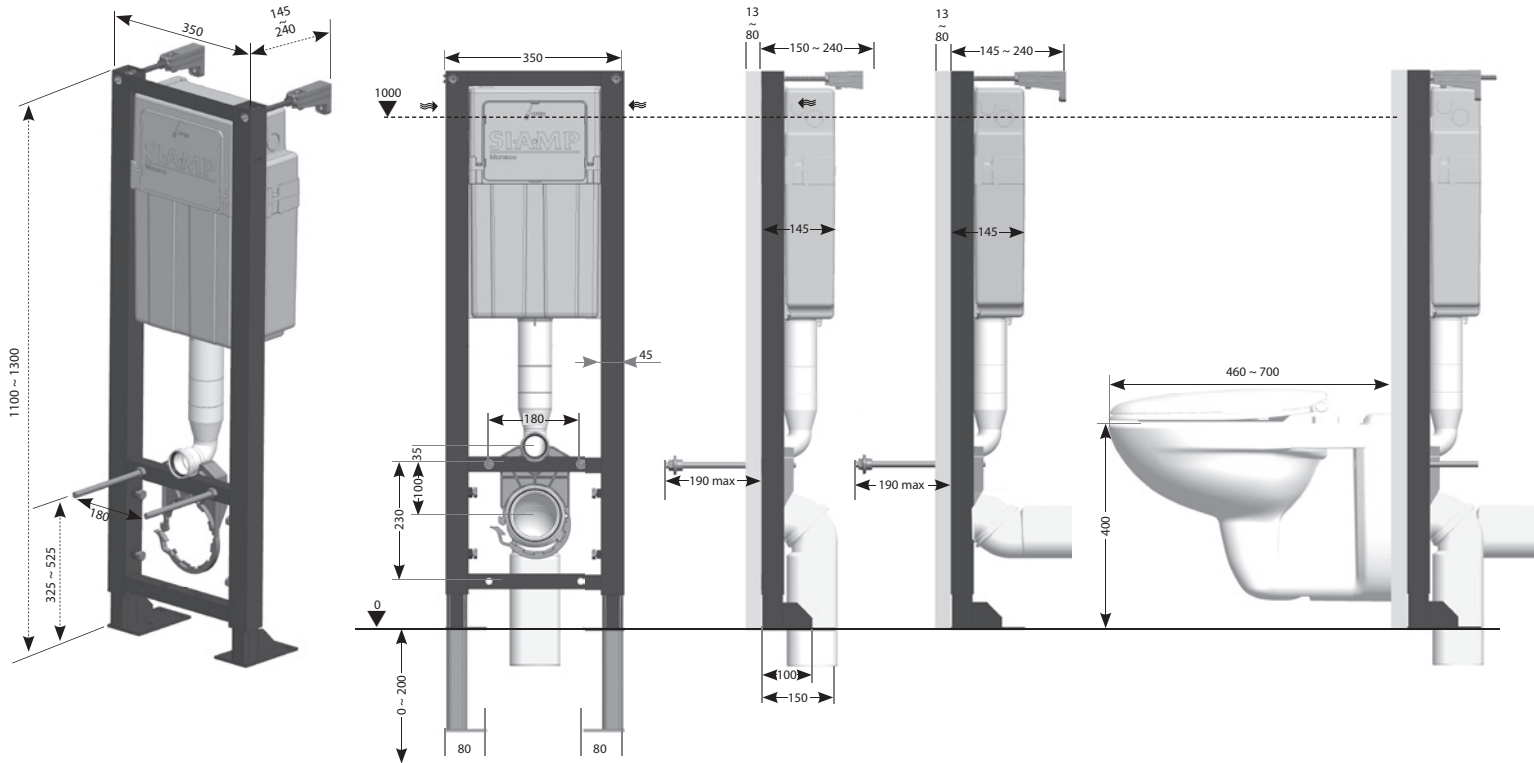
[www.siamp.fr/ingenio](http://www.siamp.fr/ingenio)

# ÉCLATÉ



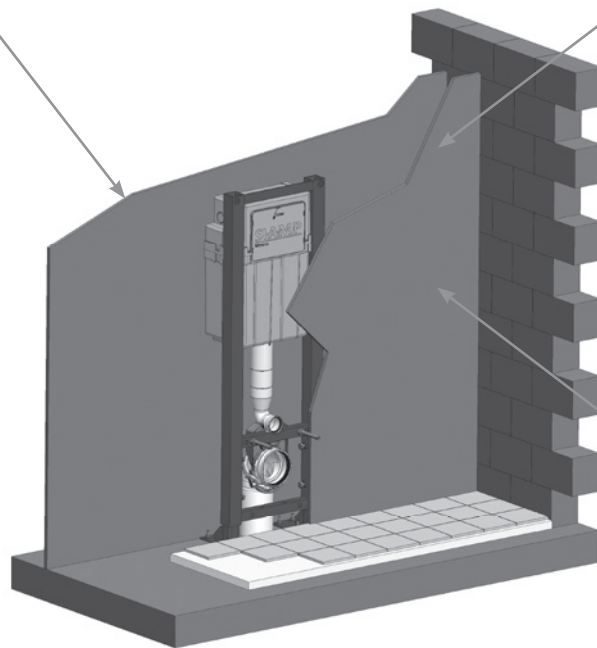
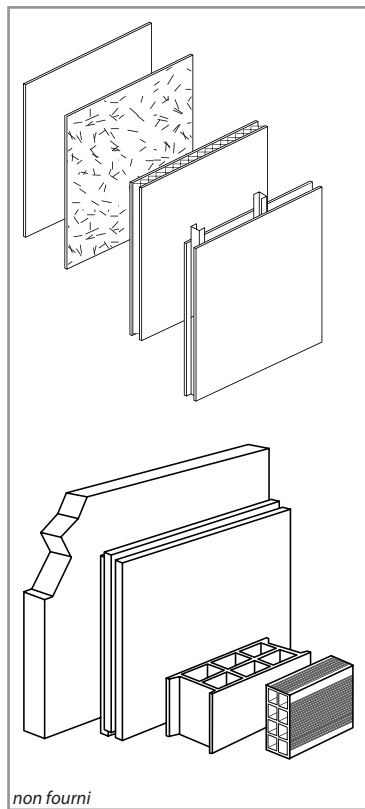
\* Selon version  
Upon version

# DIMENSIONS (mm)

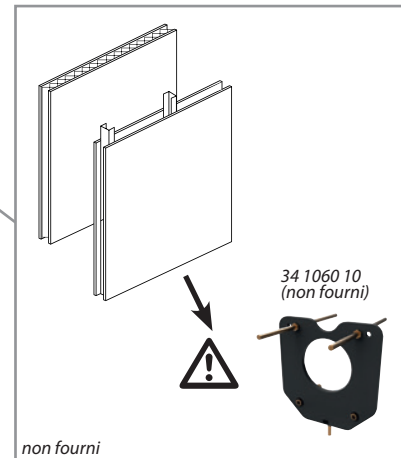
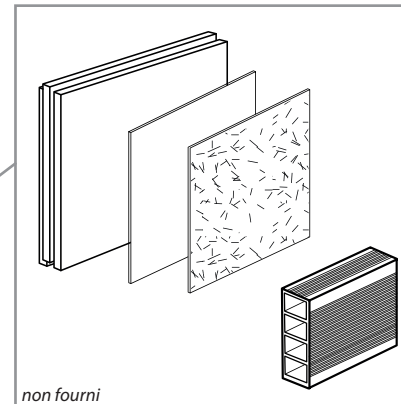


# PAROIS

ARRIÈRE

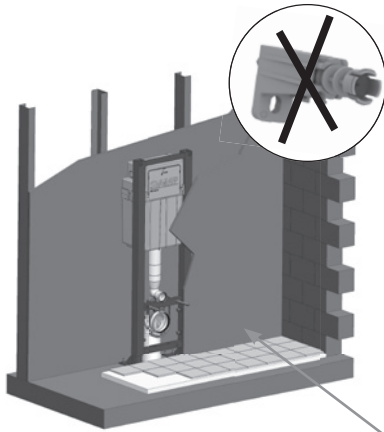
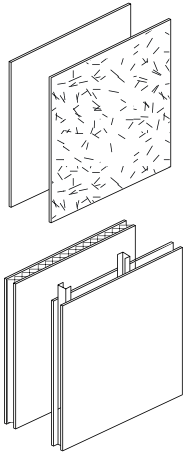


AVANT

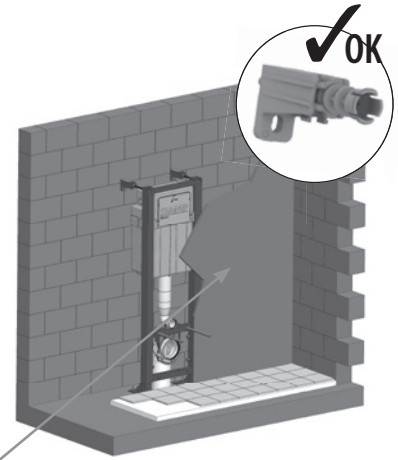
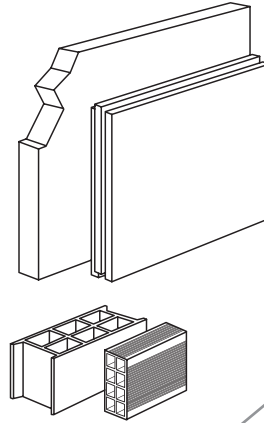


# CAS DE POSE

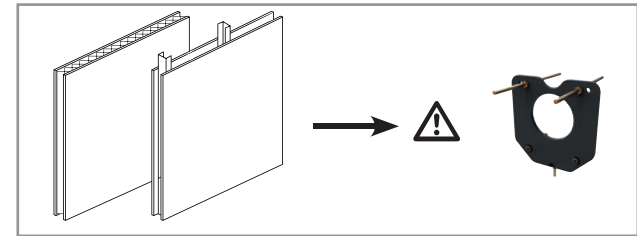
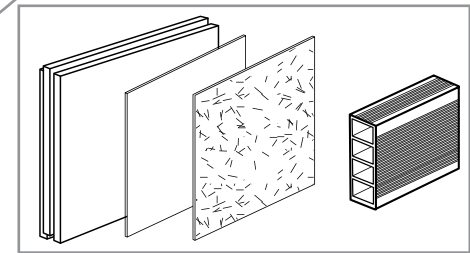
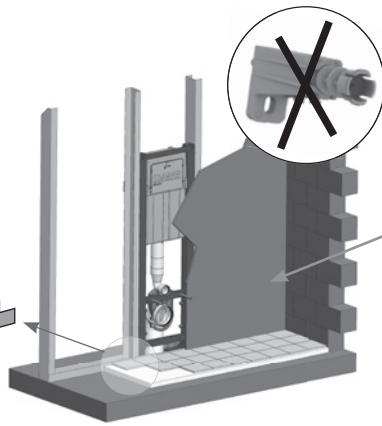
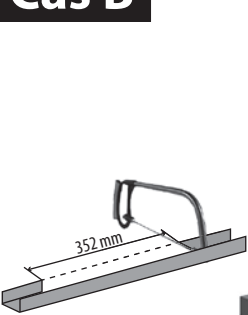
## Cas A

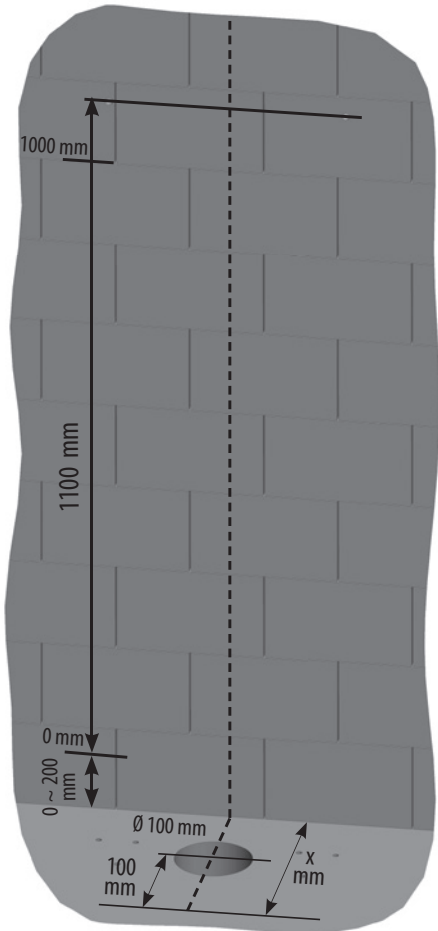


## Cas C

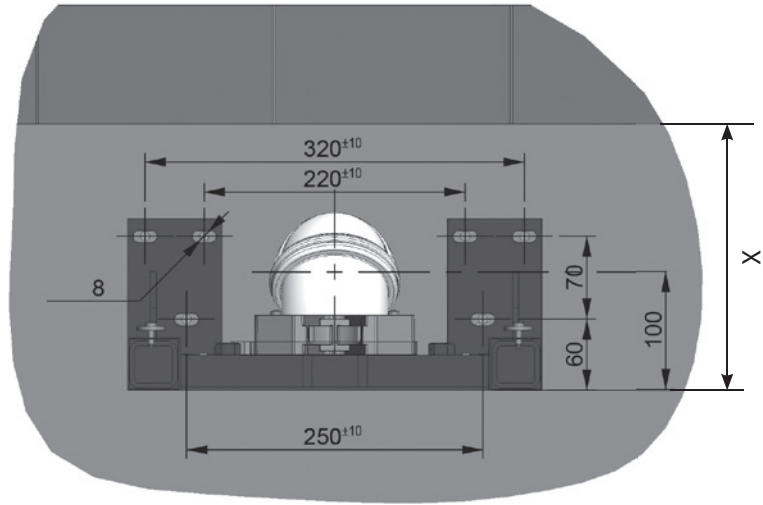


## Cas B



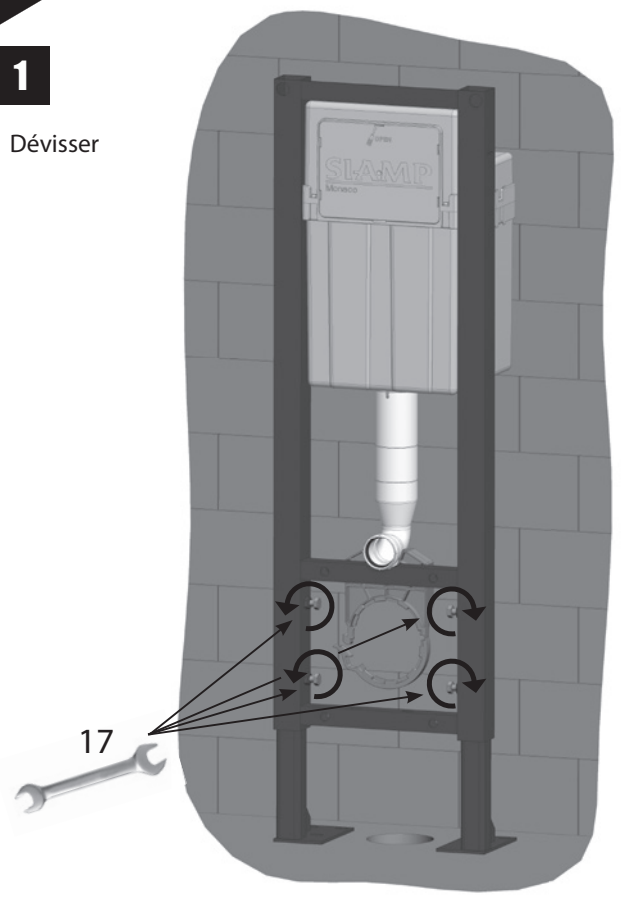


Vue de dessus



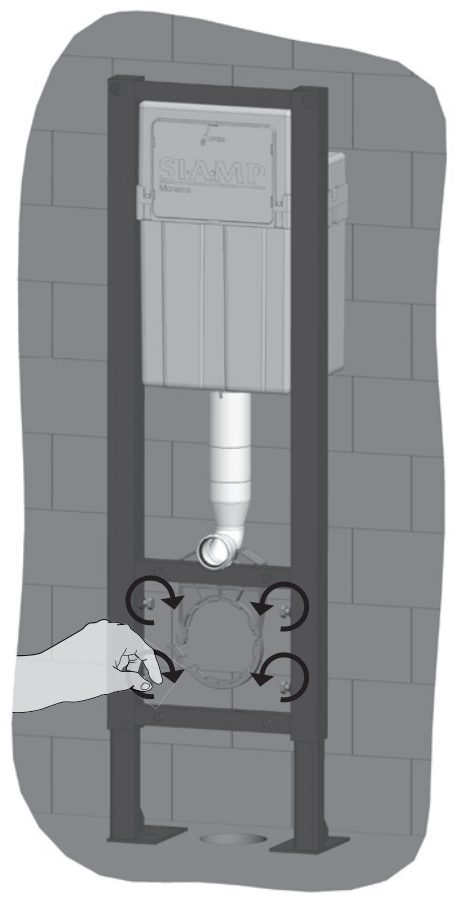
**1**

Dévisser

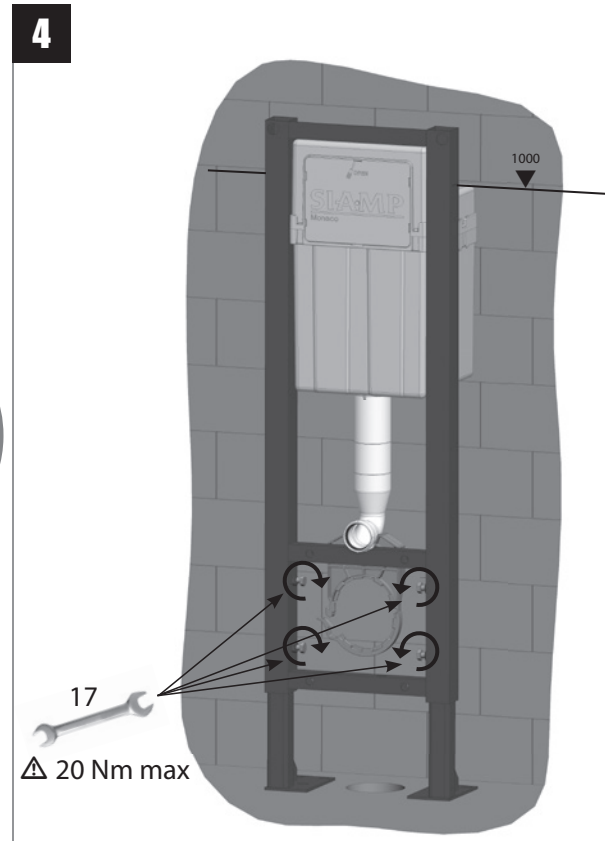
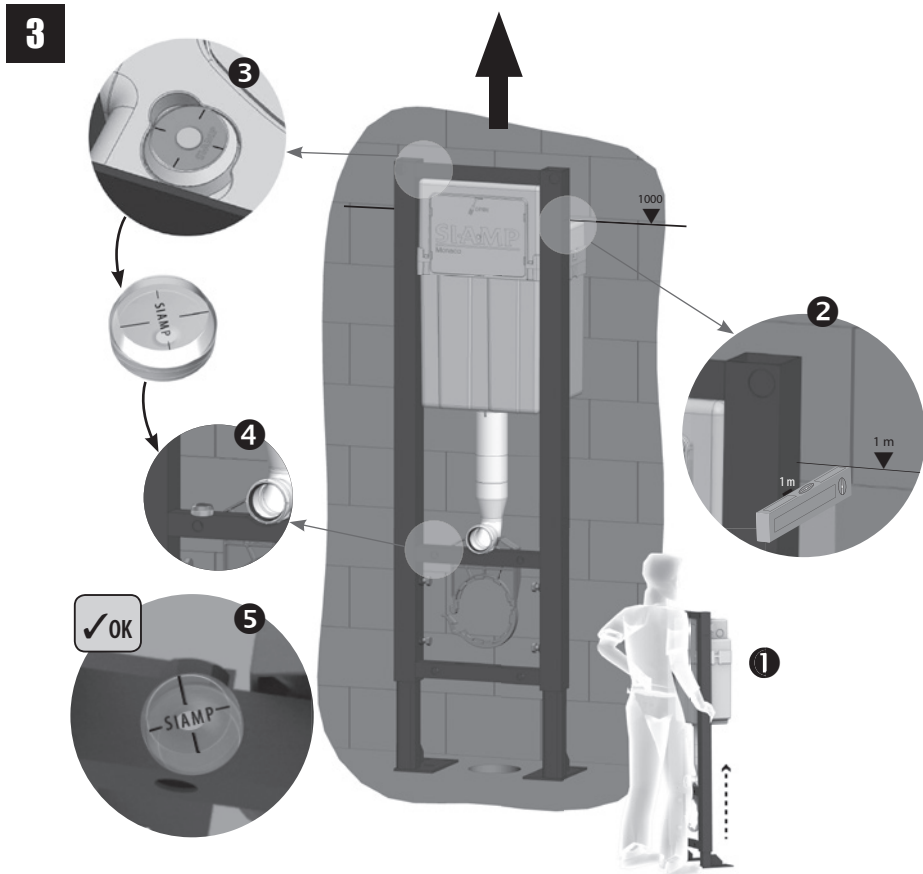


**2**

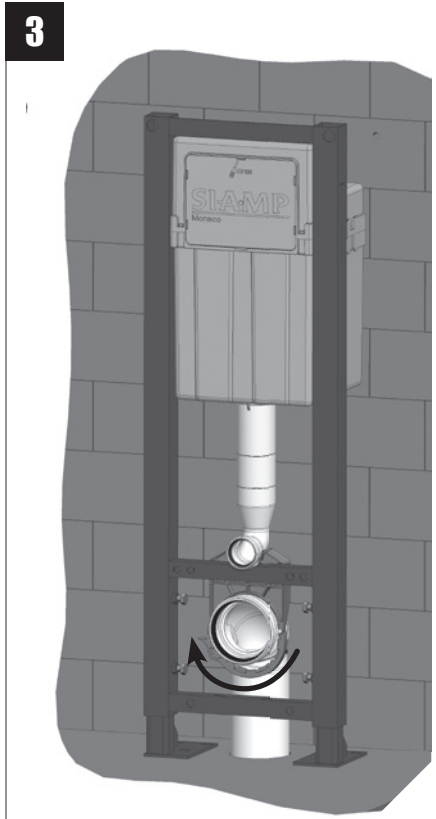
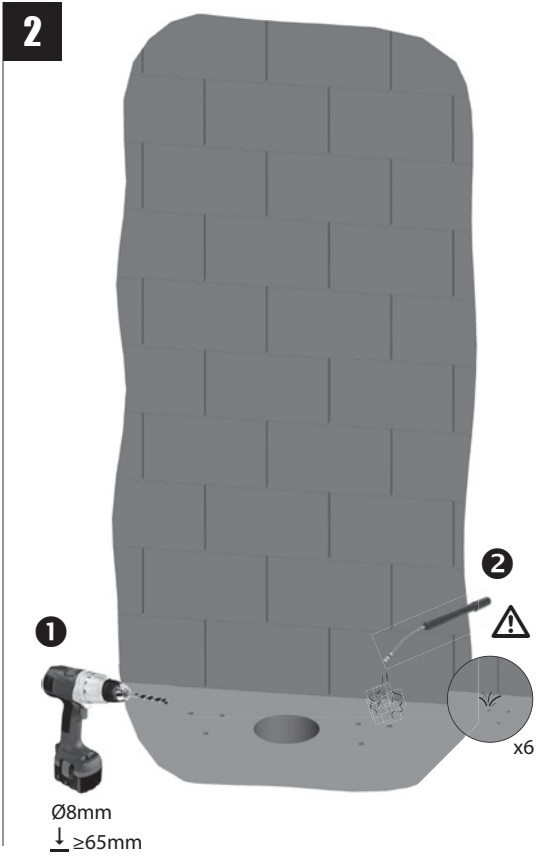
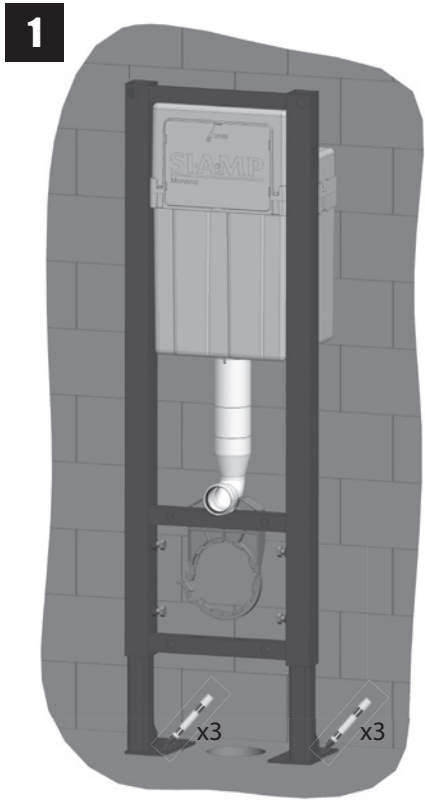
Visser à la main jusqu'à ce que les vis opposent une résistance



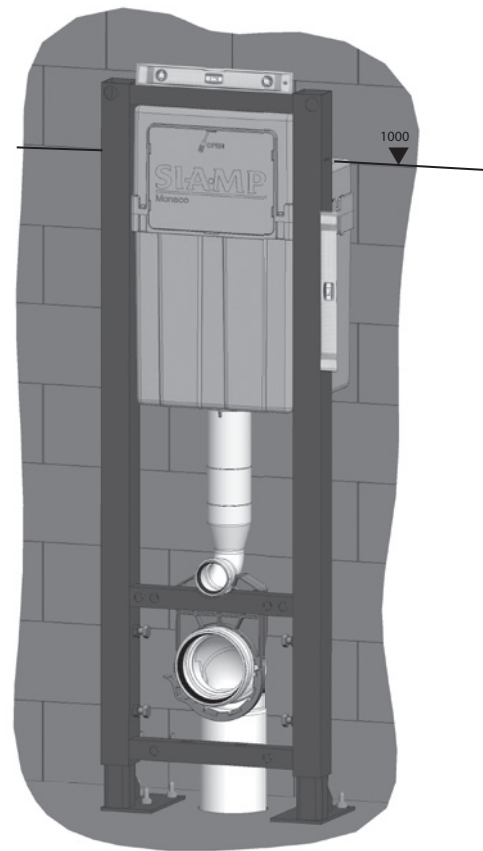
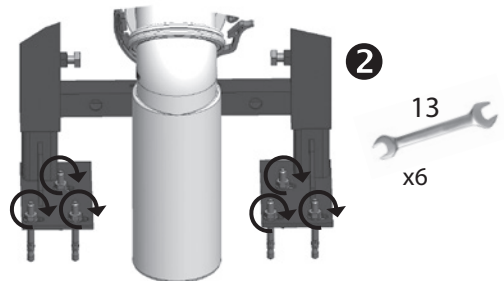
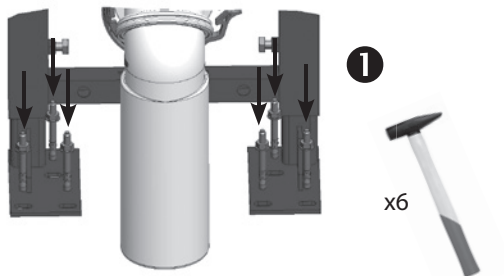
# RÉGLAGE EN HAUTEUR







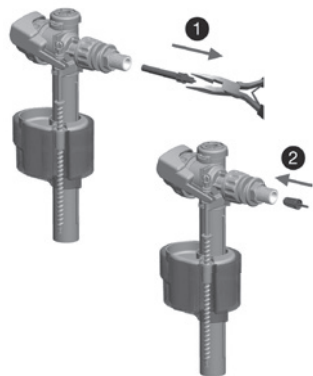
# FIXATION



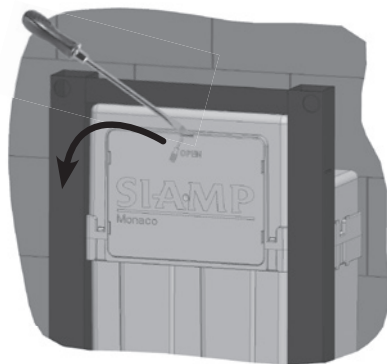
# CONNEXION EN EAU (À DROITE)



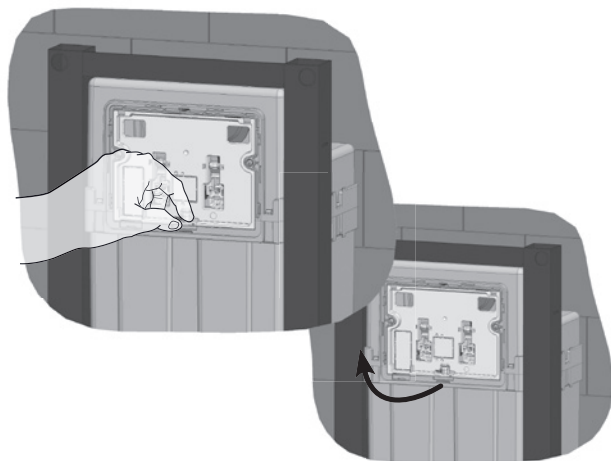
Pression < 1 bar



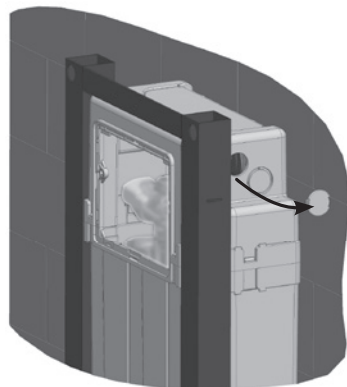
1



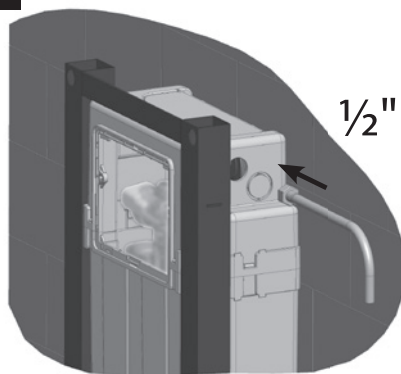
2



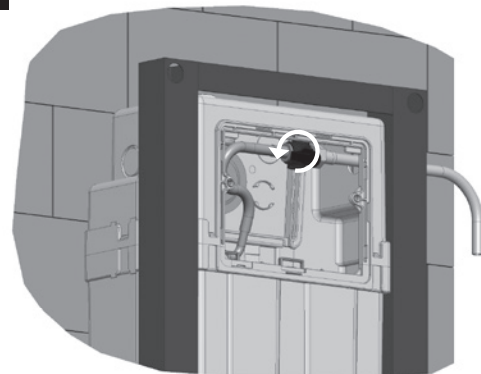
3



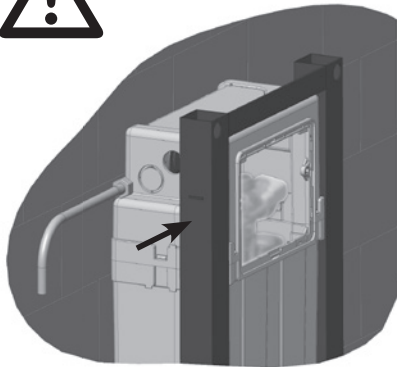
4



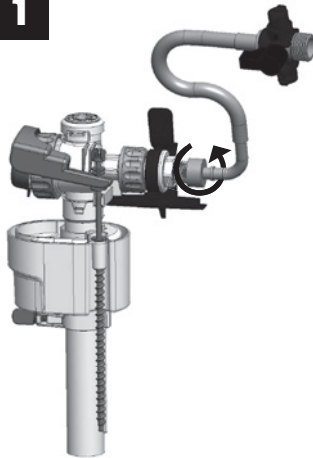
5



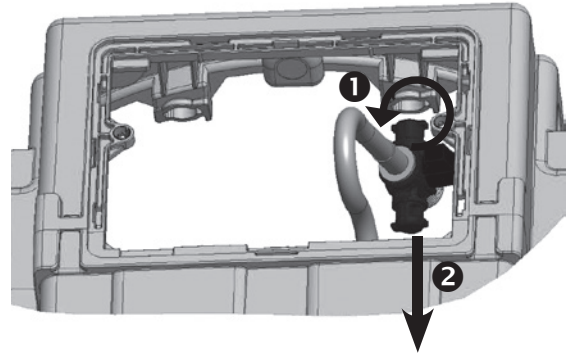
# CONNEXION EN EAU (À GAUCHE)



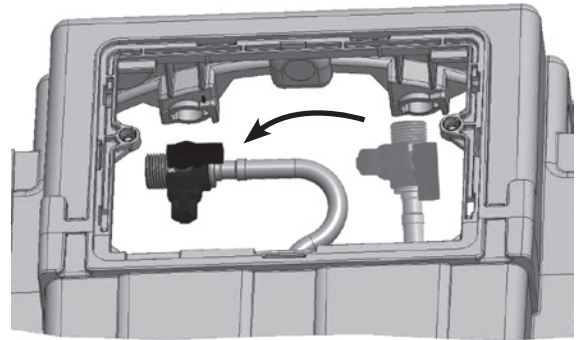
**1**



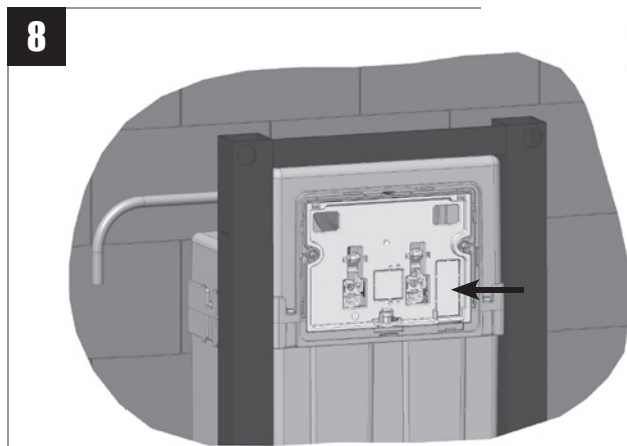
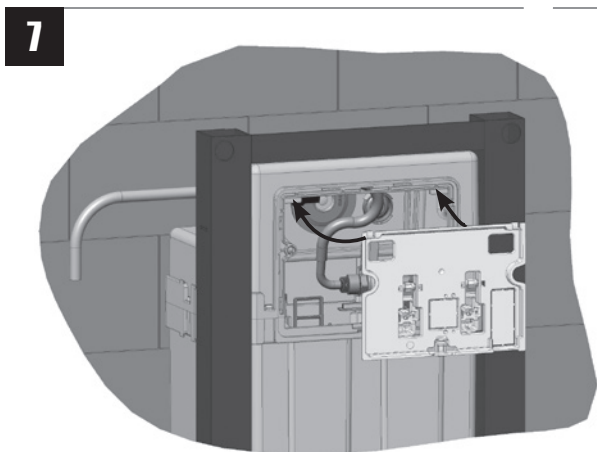
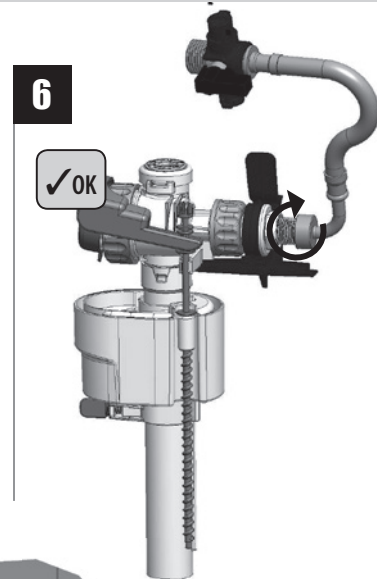
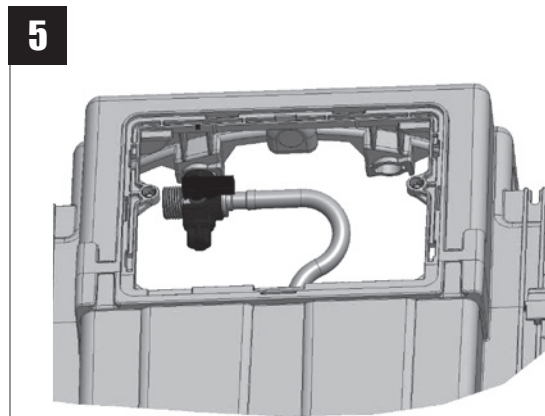
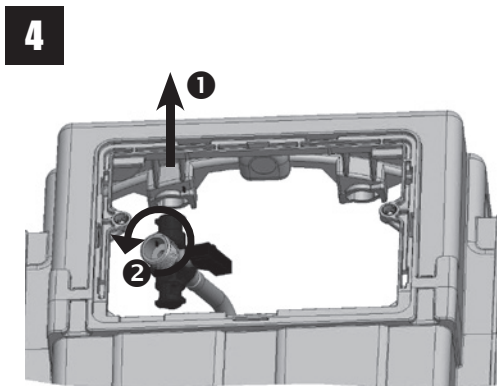
**2**



**3**

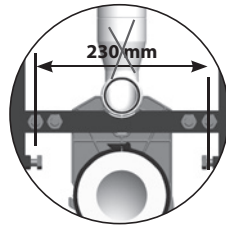
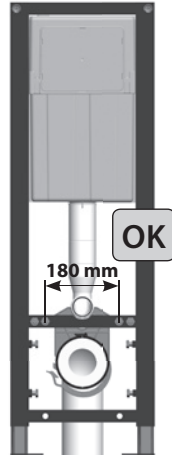
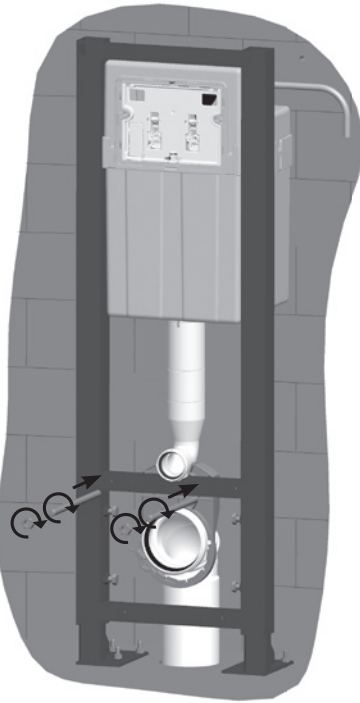


# CONNEXION EN EAU (À GAUCHE)

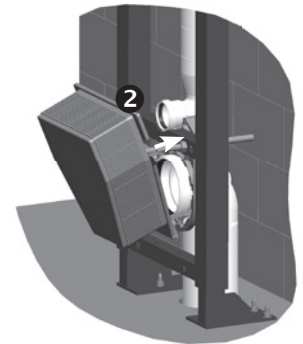
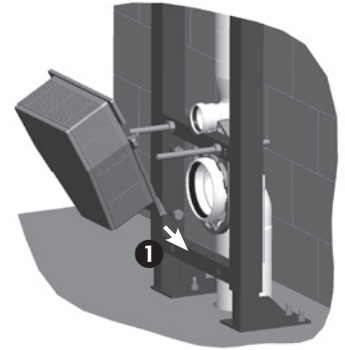
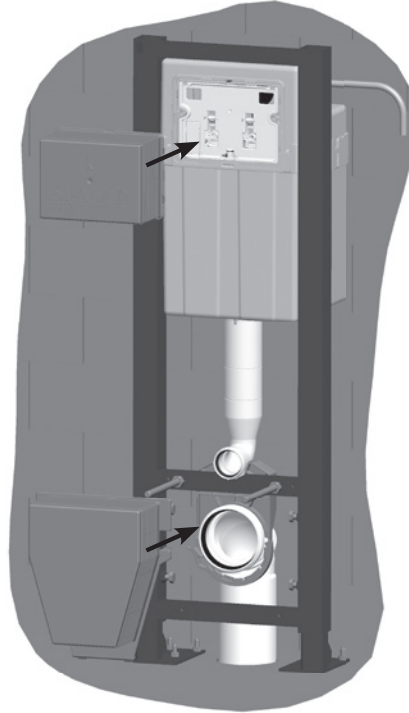


# PRÉPARATION DE L'HABILLAGE

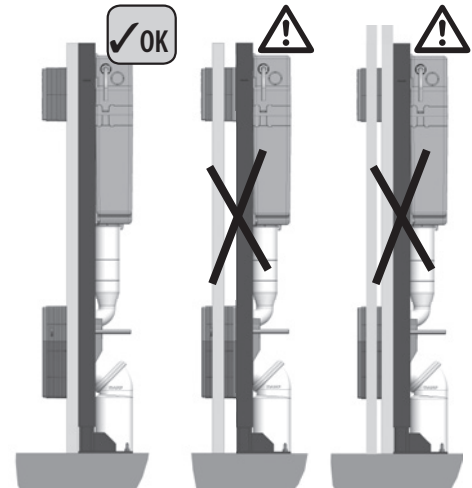
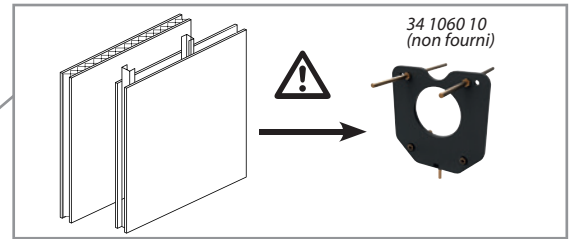
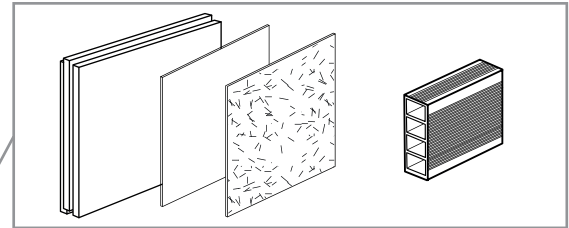
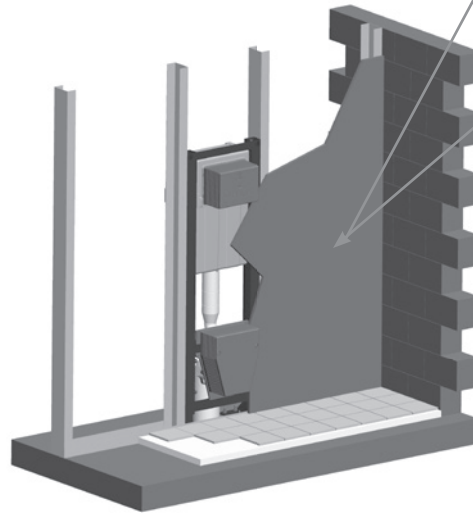
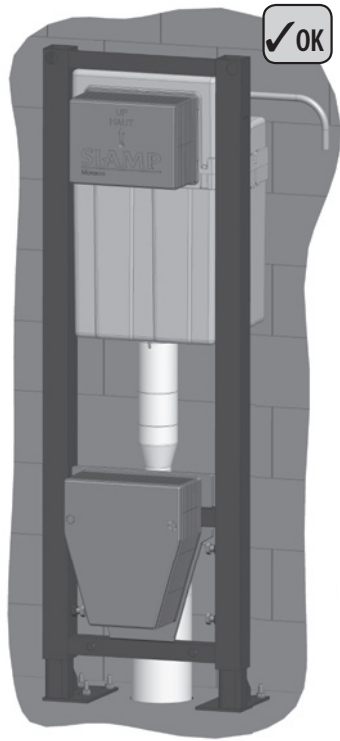
1

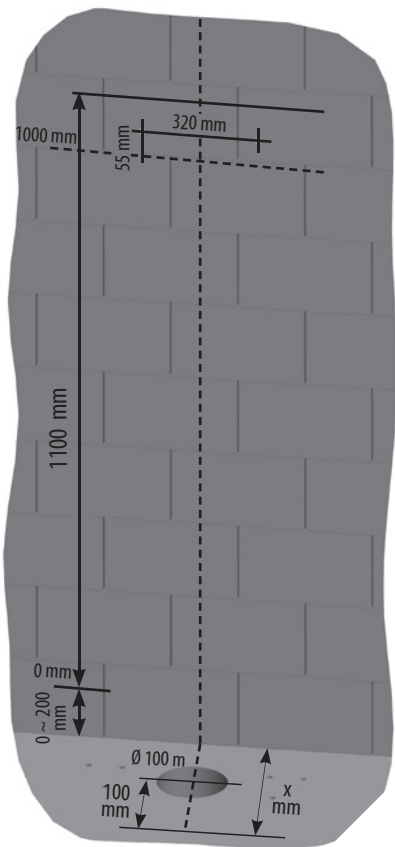


2

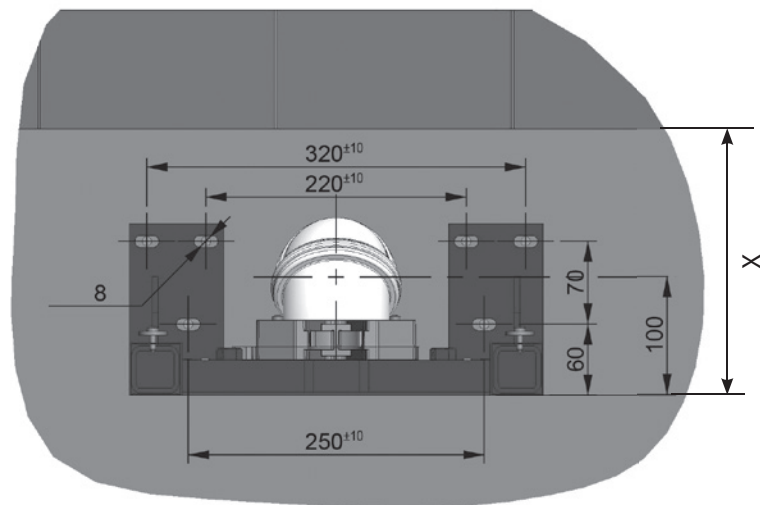


# PRÉPARATION DE L'HABILLAGE



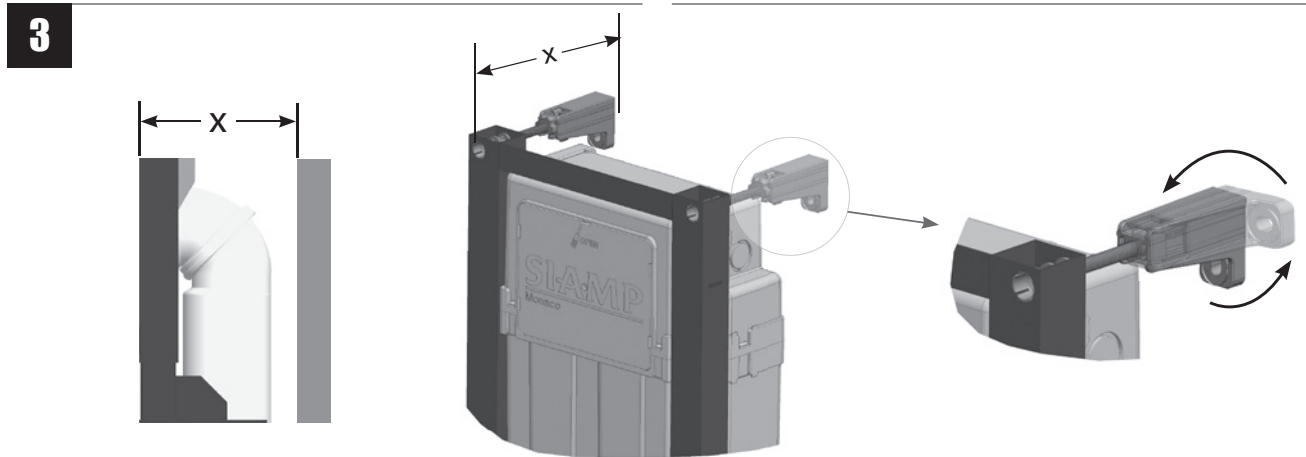
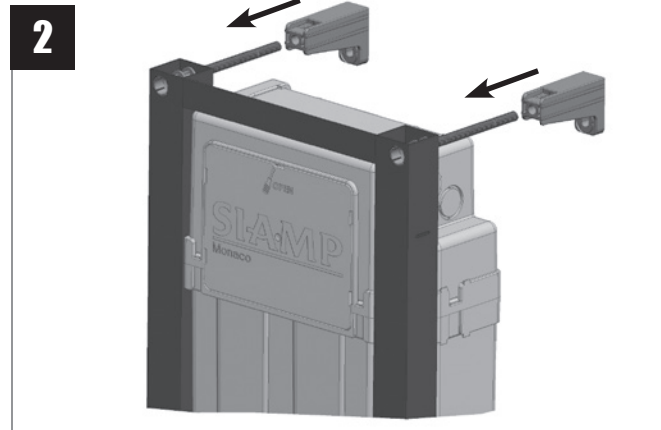
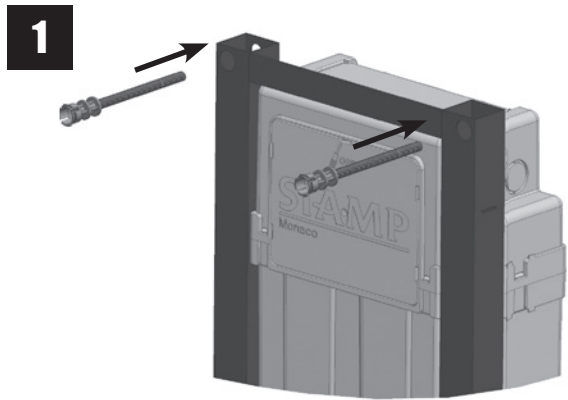


Vue de dessus





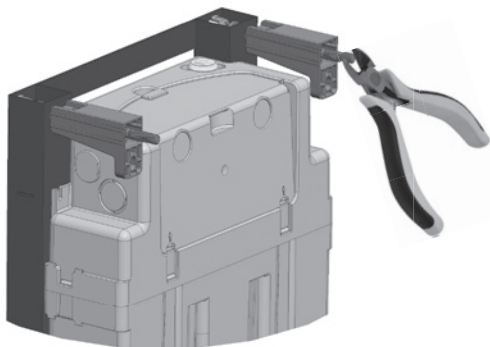
# INSTALLATION FIXATION HAUTE (Liaison murale haute optionnelle)



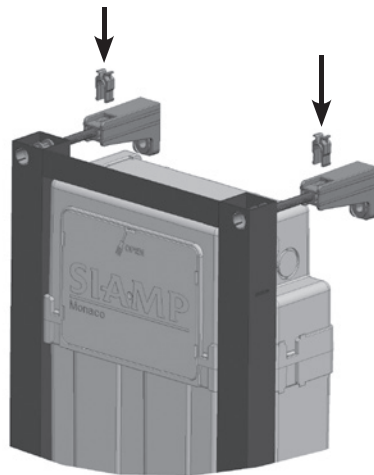
# INSTALLATION FIXATION HAUTE (Liaison murale haute optionnelle)

si  $x \leq 180$  mm

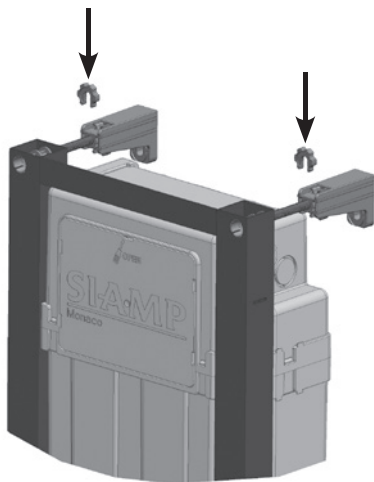
4



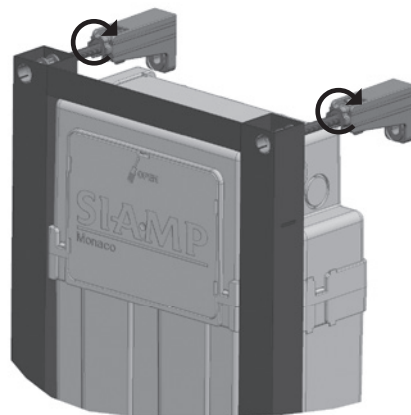
5



6

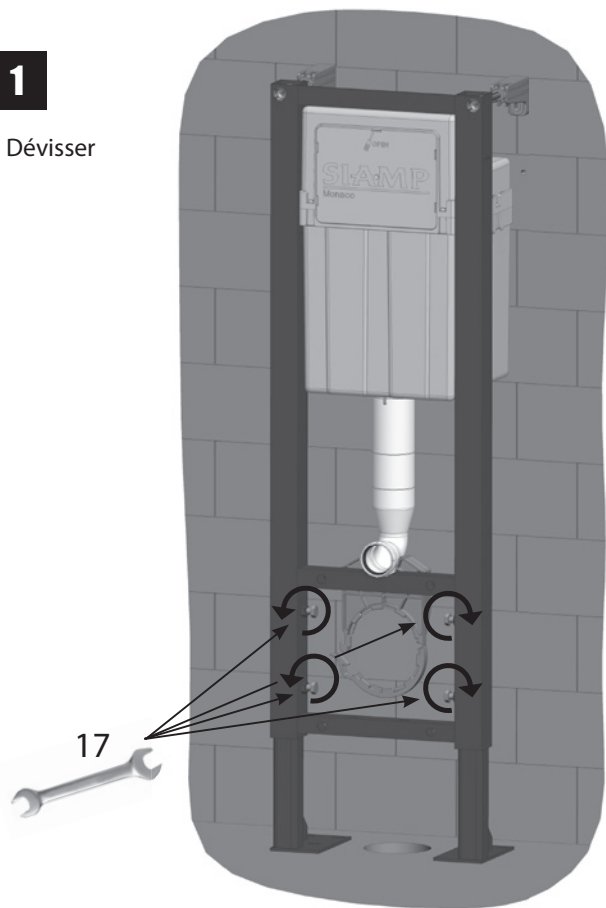


7



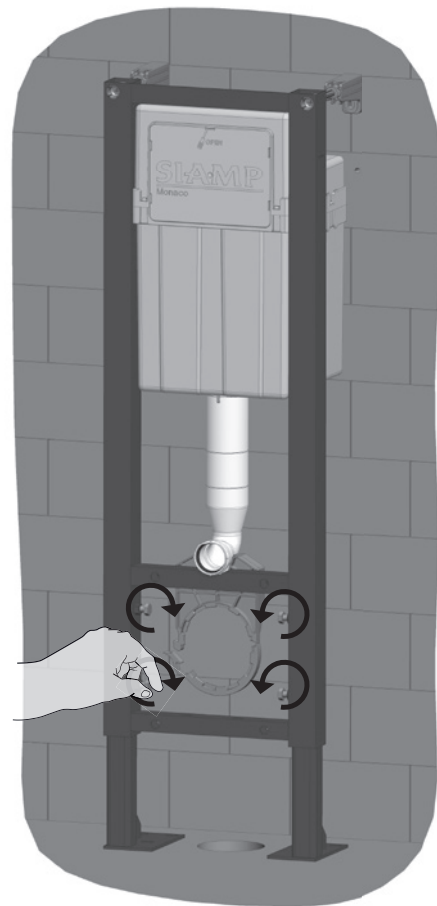
**1**

Dévisser

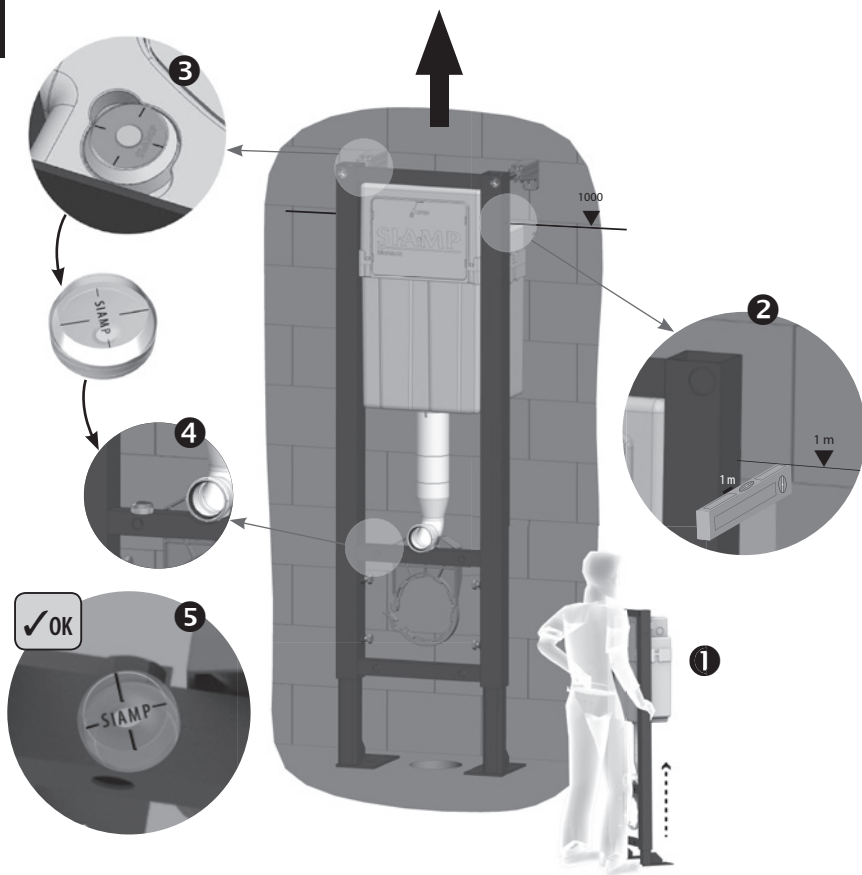


**2**

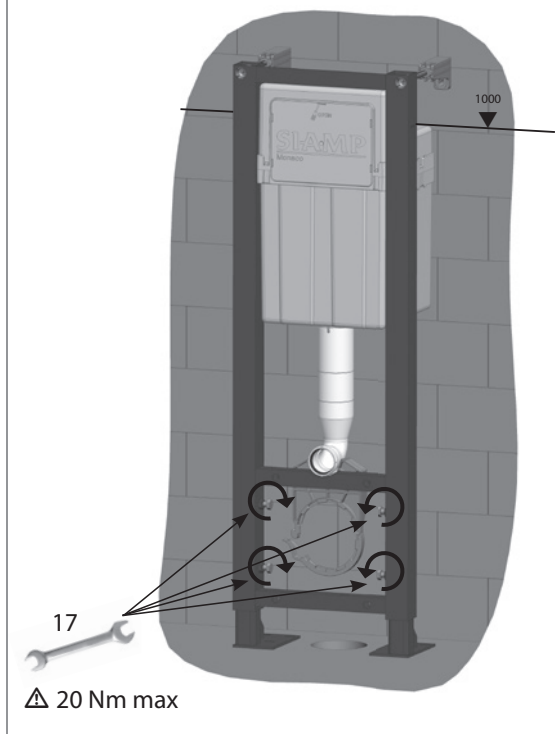
Visser à la main jusqu'à ce que les vis opposent une résistance

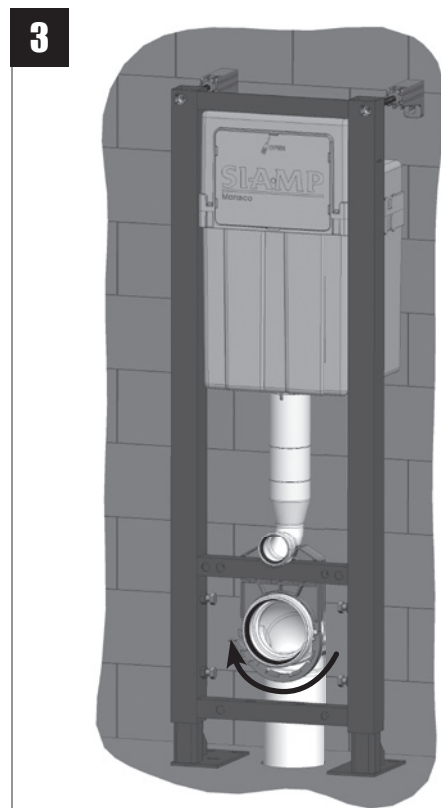
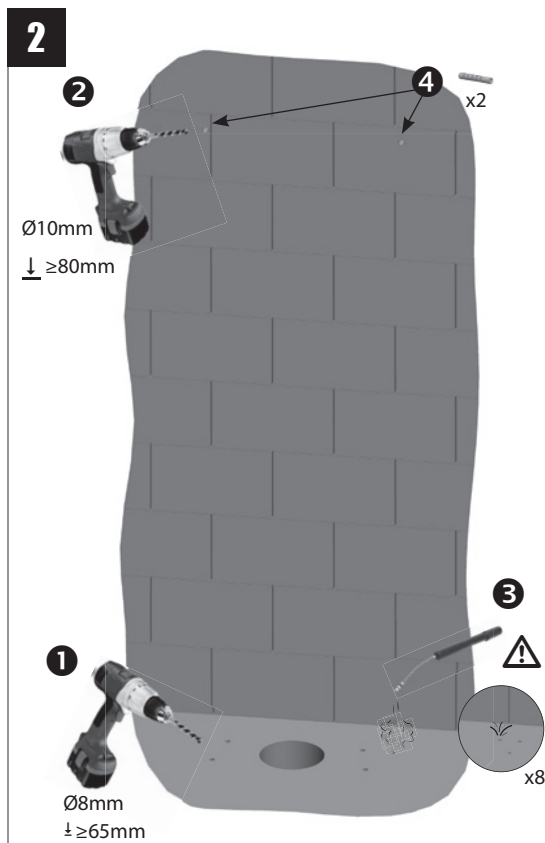
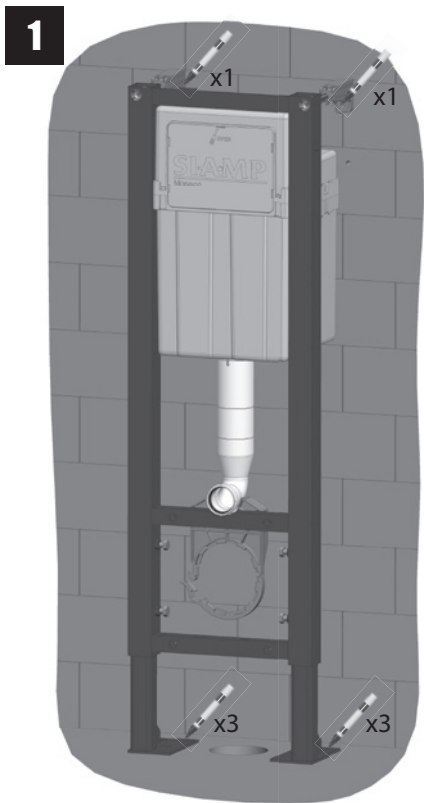


1

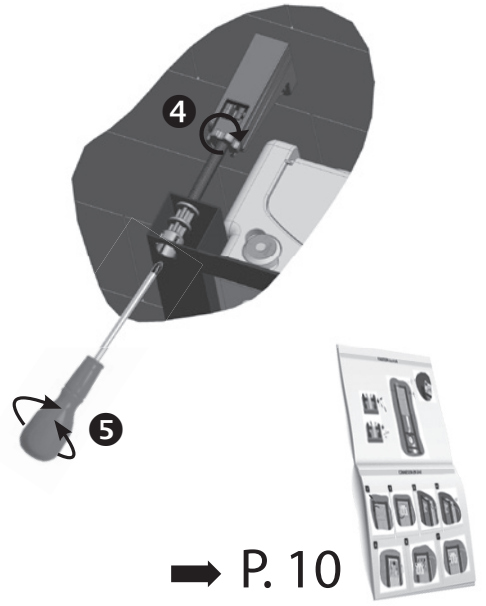
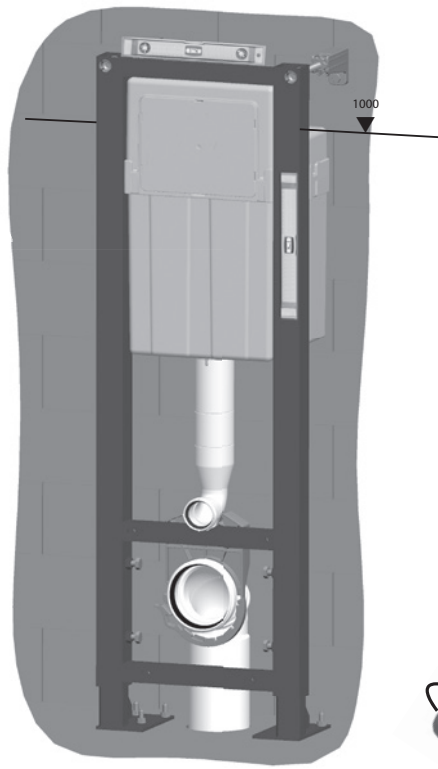
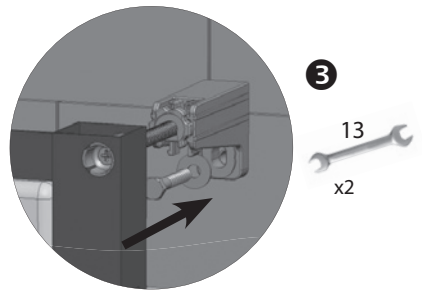
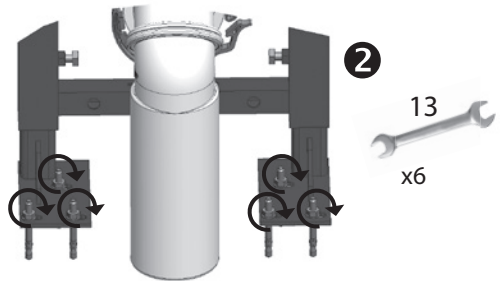
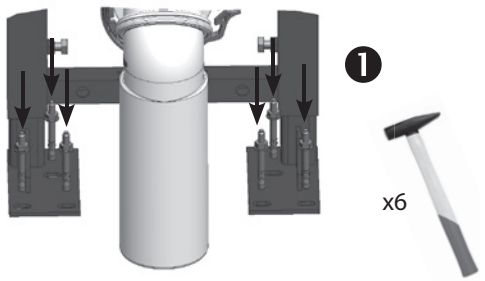


2





# FIXATION (Liaison murale haute optionnelle)







**SIAMP**

Monaco

4, quai Antoine 1er - BP 219 - MC 98007 MONACO Cedex  
Fax : +377 92 05 71 04 - [contact@siamp.com](mailto:contact@siamp.com) - [www.siamp.com](http://www.siamp.com)

10 0052 19

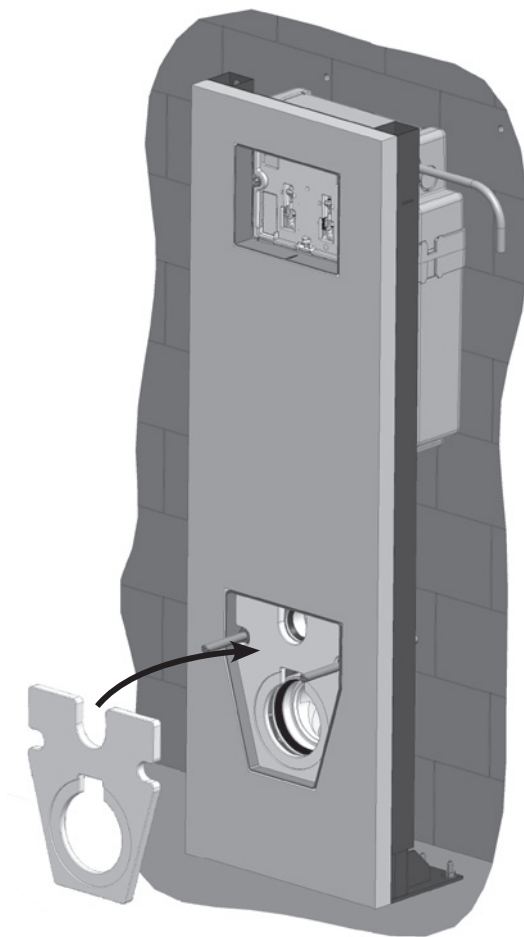
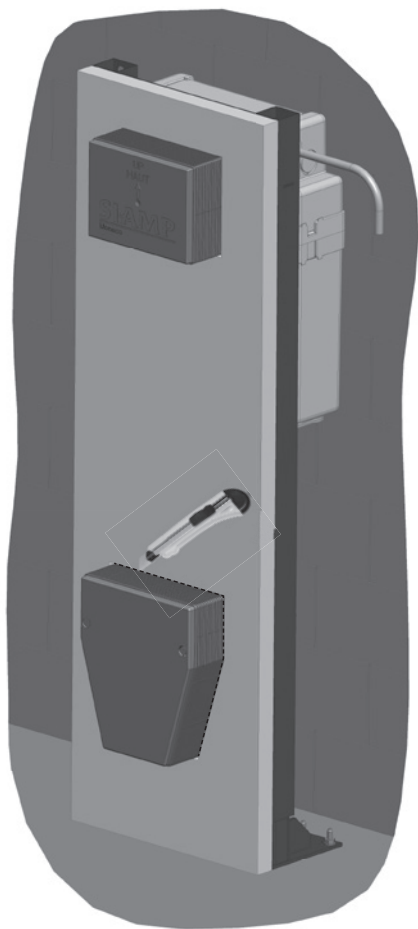


## Installation

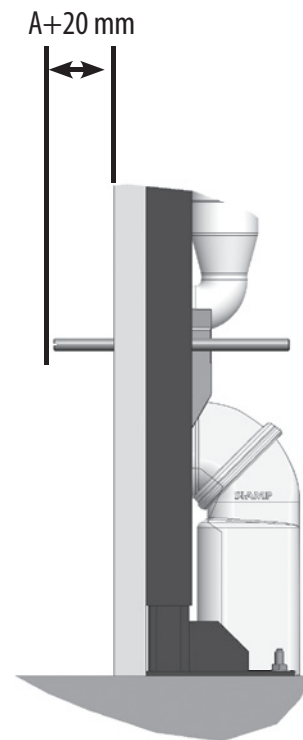
### CUVETTE / BOWL



# PREPARATION



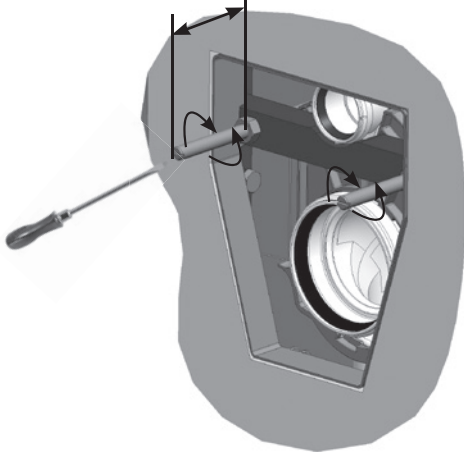
# PRISE DE CÔTE / MEASUREMENT



# RÉGLAGE TIGES FILETÉES / *THREADED RODS ADJUSTMENT*

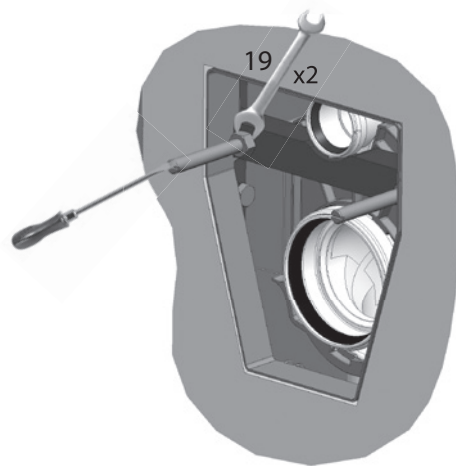
**1**

A+20 mm

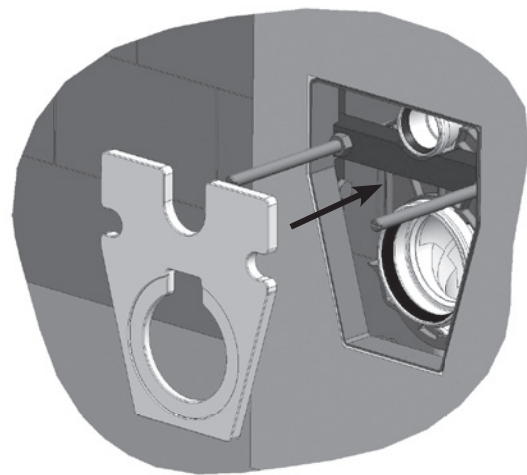


**2**

19 x2

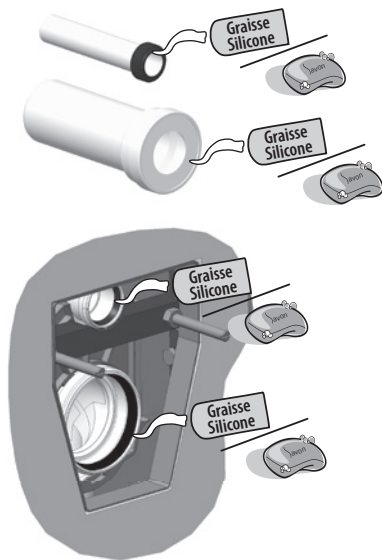


**3**

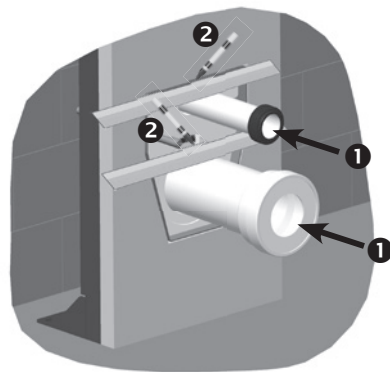


# DÉCOUPE MANCHONS / SLEEVES CUT

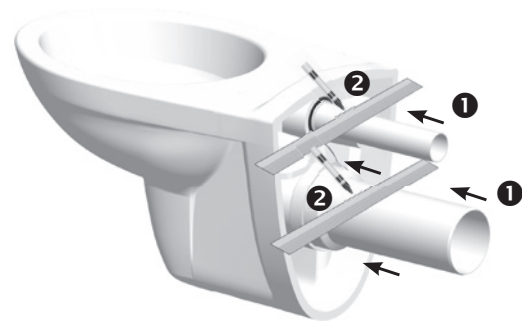
1



2

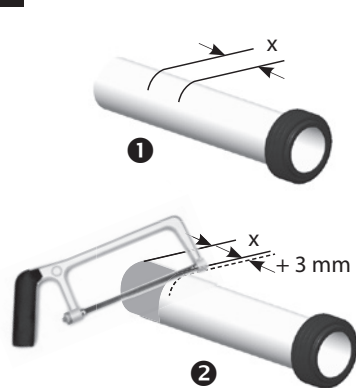


3

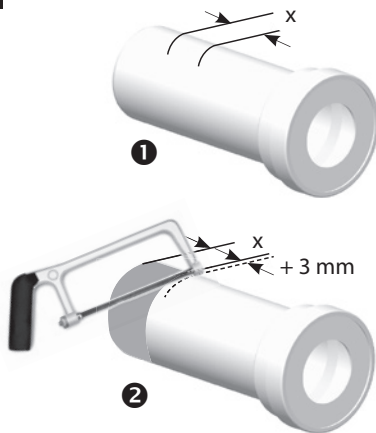


# DÉCOUPE MANCHONS / SLEEVES CUT

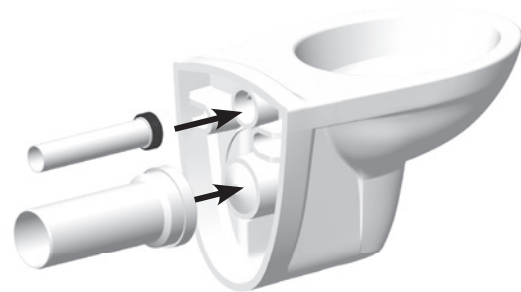
4



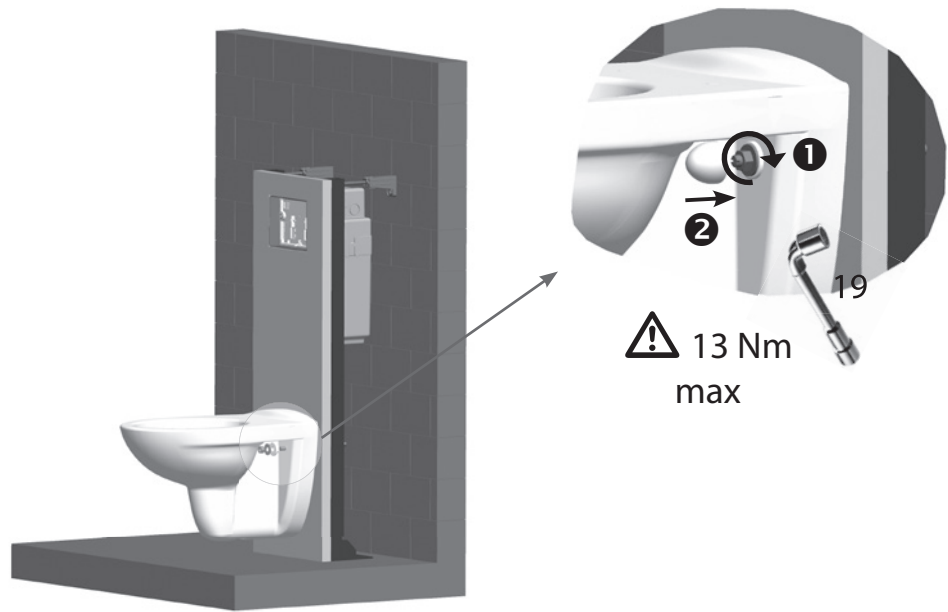
5



6



# FIXATION





**SIAMP**

Monaco

4, quai Antoine 1er - BP 219 - MC 98007 MONACO Cedex  
Fax : +377 92 05 71 04 - [contact@siamp.com](mailto:contact@siamp.com) - [www.siamp.com](http://www.siamp.com)



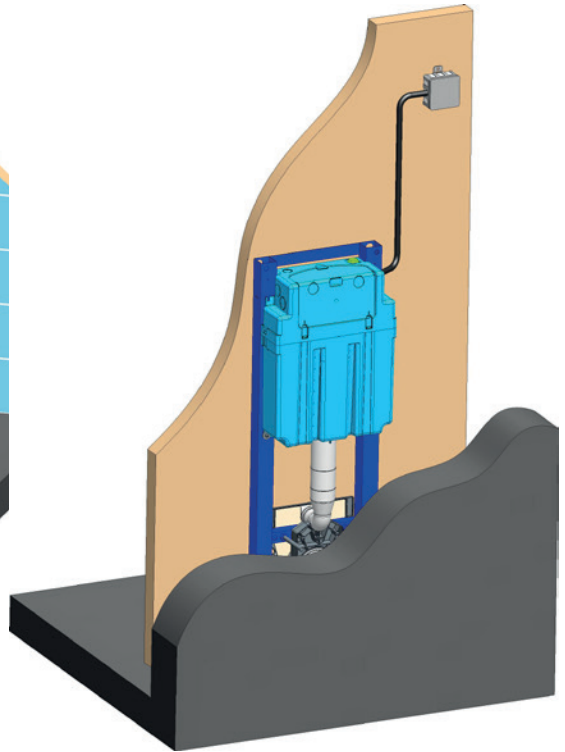
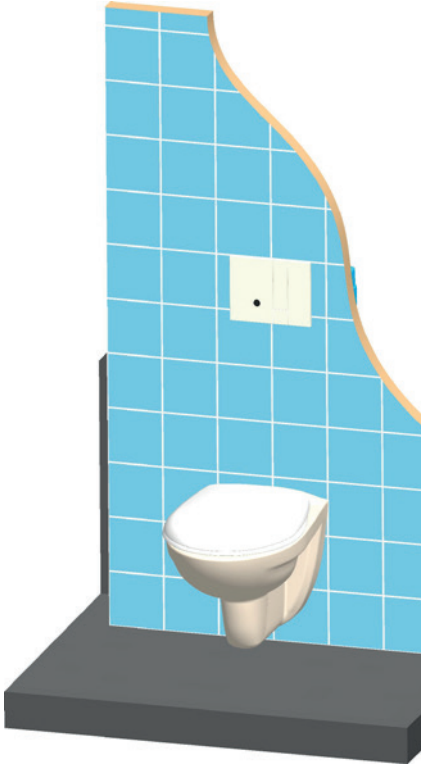
# SIAMP

Monaco

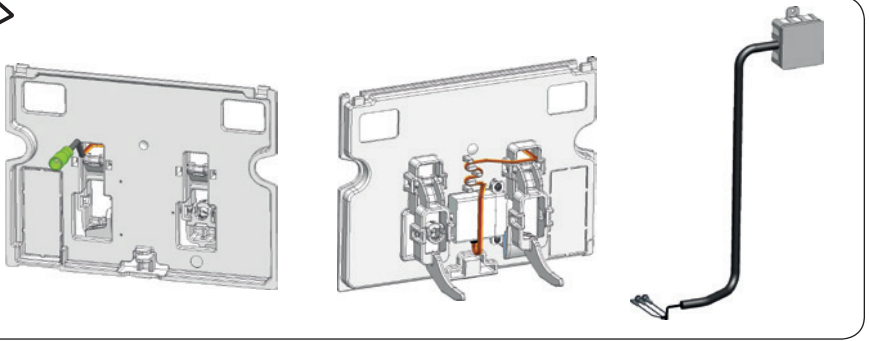
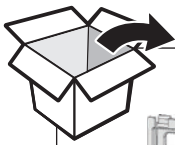
## INGENIO

### PLAQUE DE COMMANDE ELECTRONIQUE

AUTOMATIC FLUSH PLATE

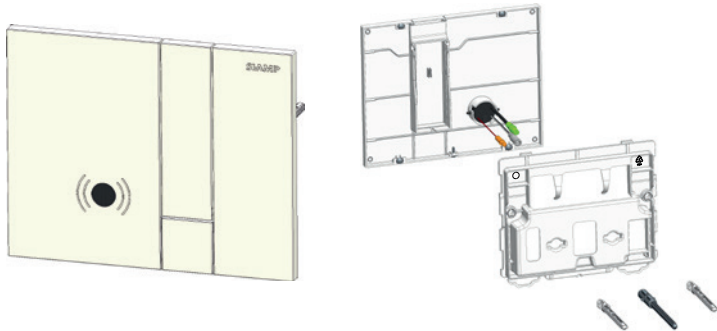


NOTICE D'INSTALLATION  
INSTALLATION INSTRUCTION



### 3 VERSIONS

**VERSION A**

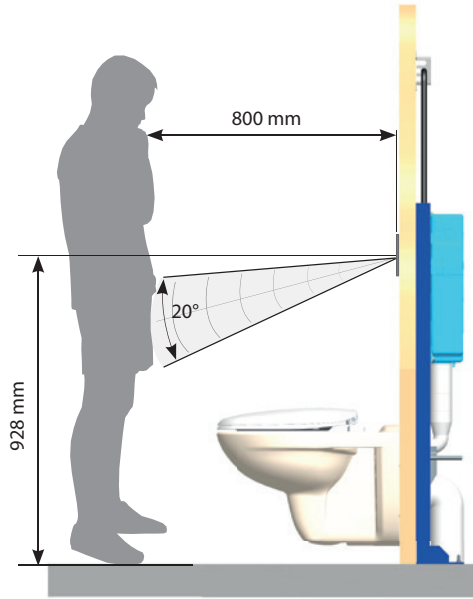


**VERSION B**

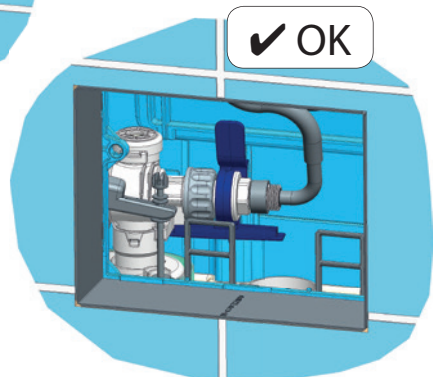
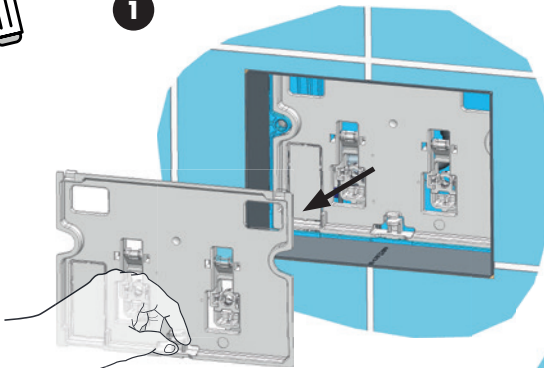


**VERSION C**





1



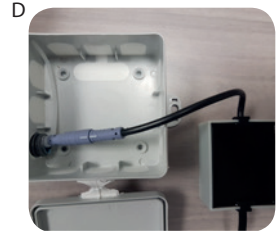
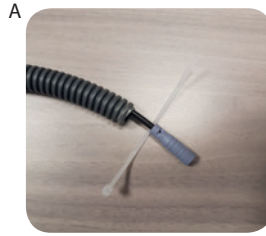
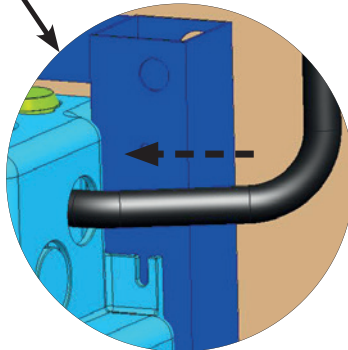
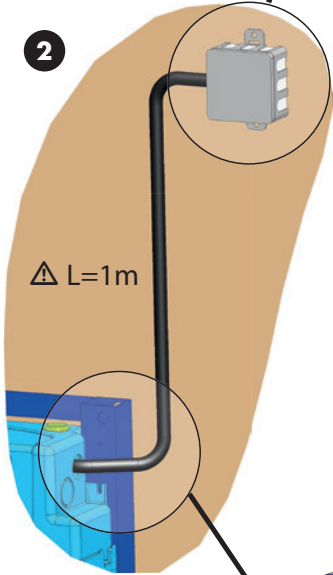


OFF

STEP 1

2

△ L=1m

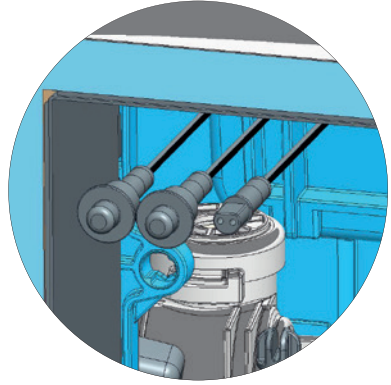
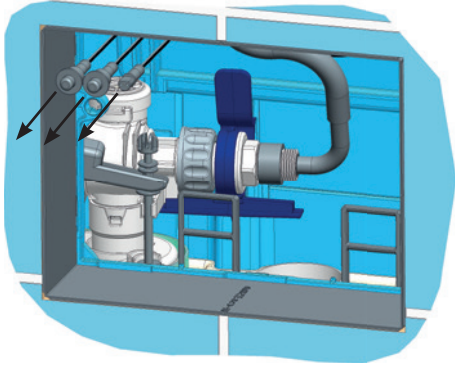


90 VAC / 264 VAC  
50Hz / 60Hz



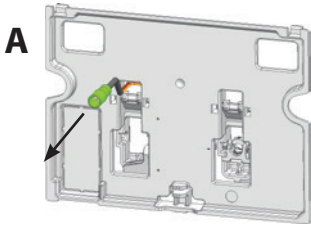
Respecter la réglementation d'installation électrique locale.  
Follow the local electrical installation rules.

3

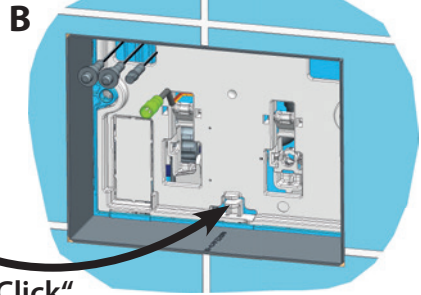


STEP 1

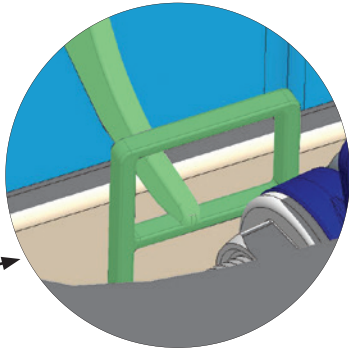
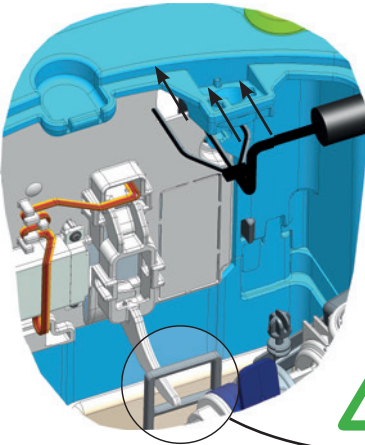
4



✓ OK

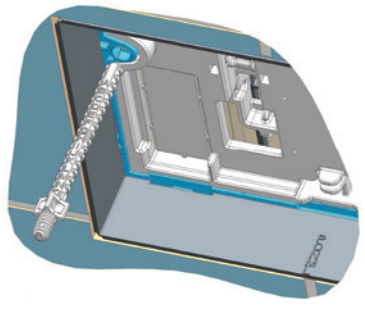
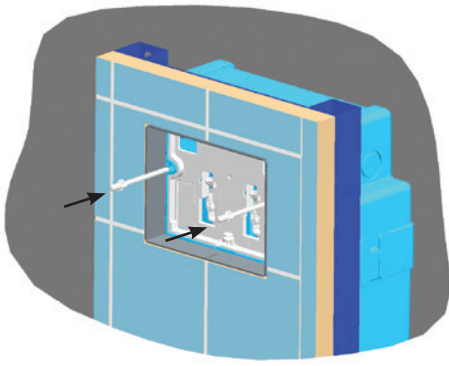


STEP 2

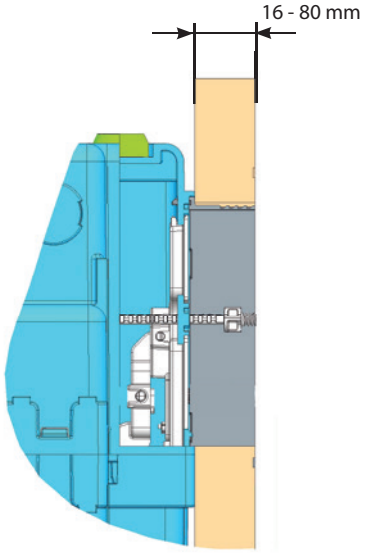
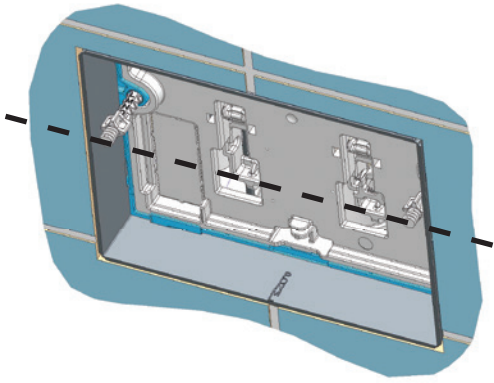


# VERSION A

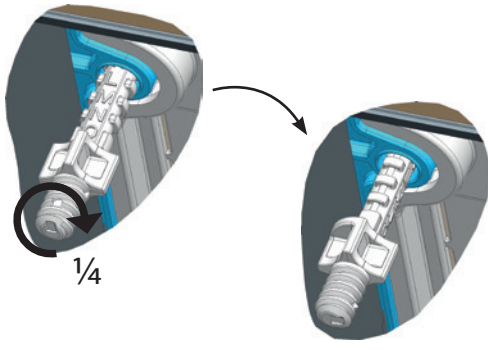
1



2



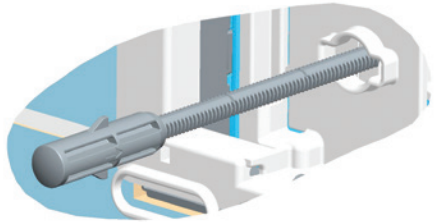
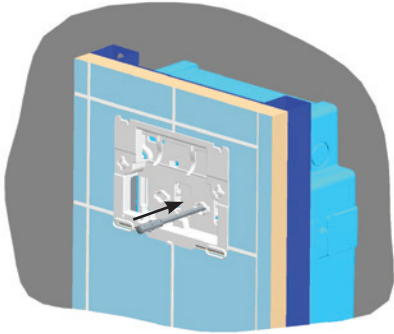
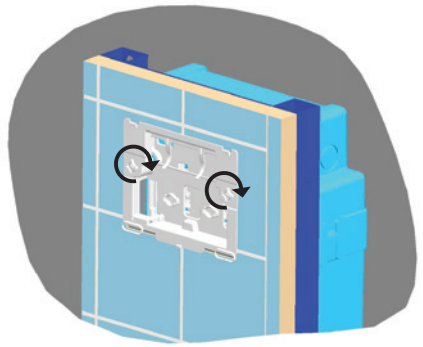
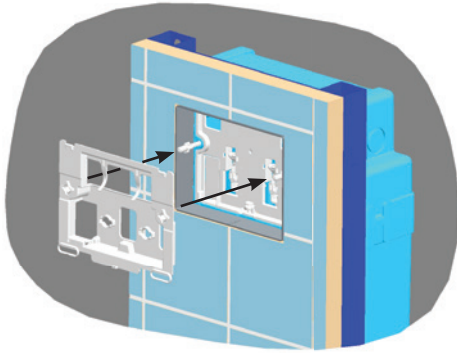
3



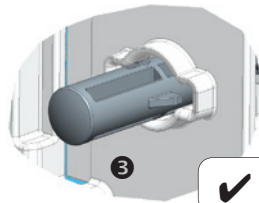
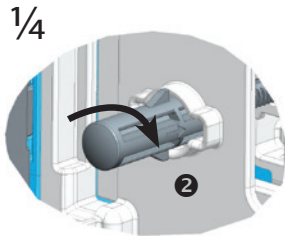
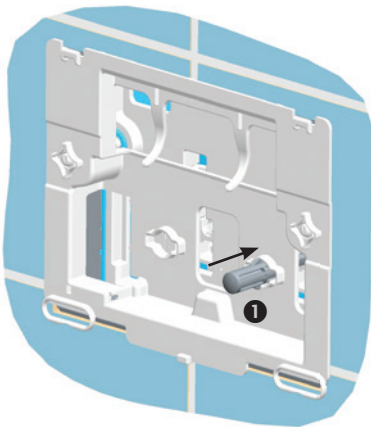
STEP 3

# VERSION A

4



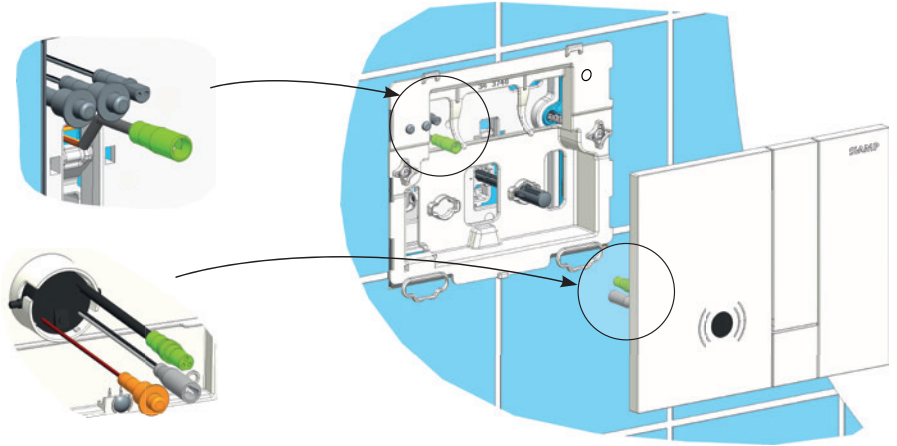
5



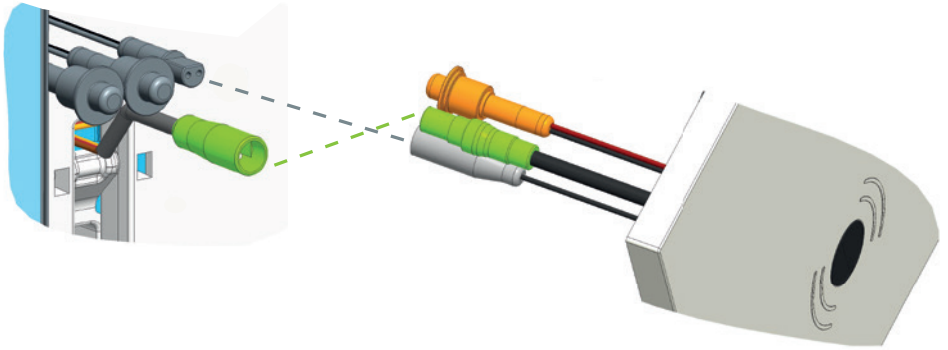
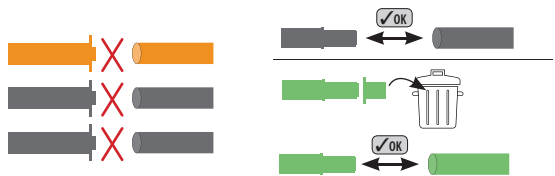
✓ OK

STEP 3

6

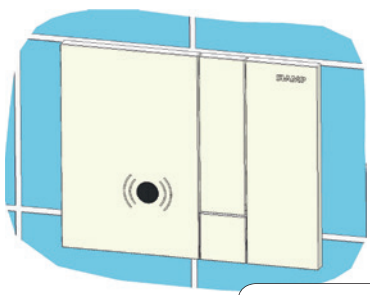
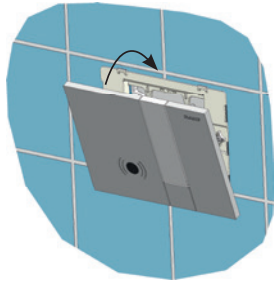
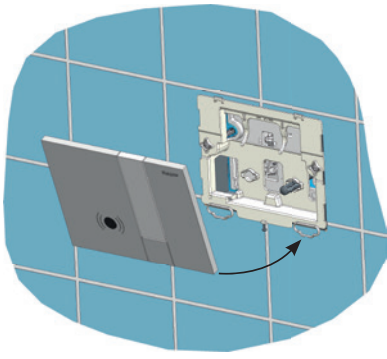


7



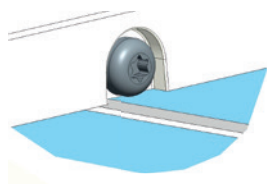
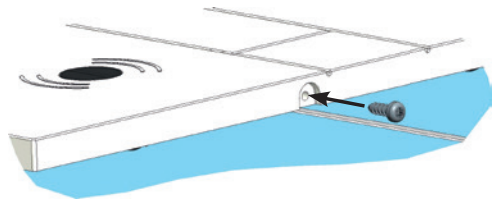


8



✓ OK

9

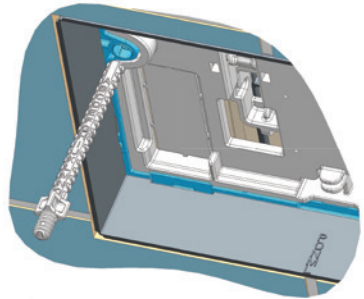
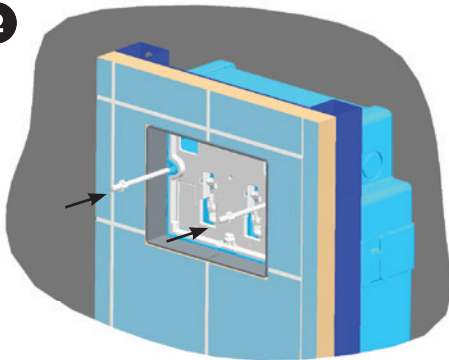


# VERSIONS B & C

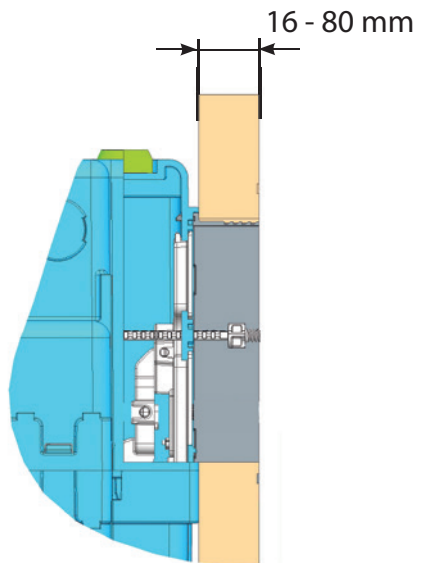
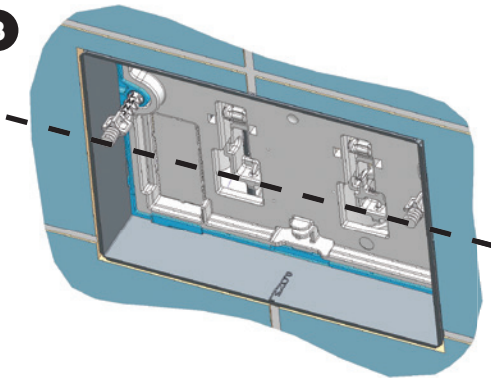
1



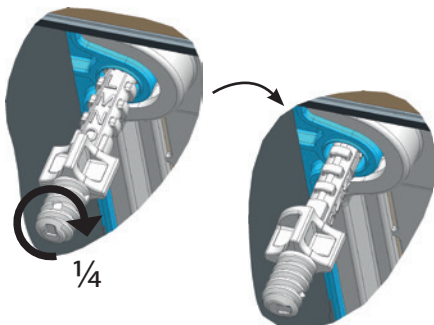
2



3



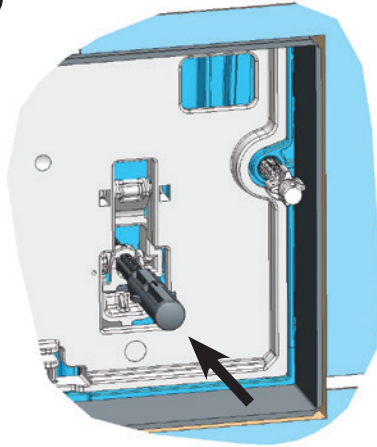
4



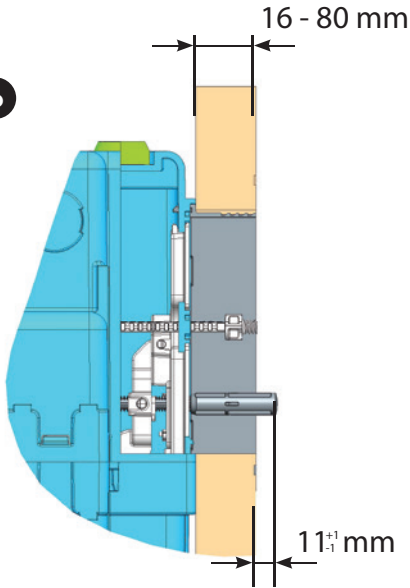
STEP 3

# VERSIONS B & C

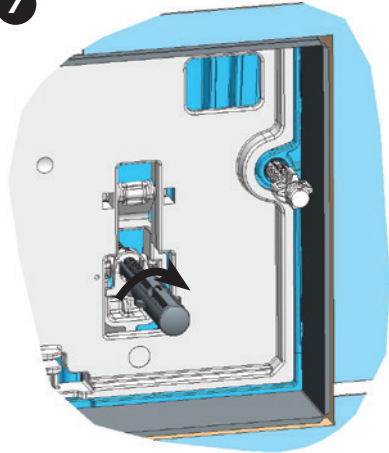
5



6

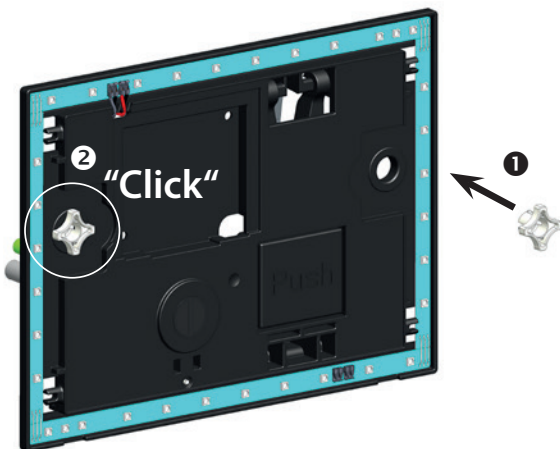


7

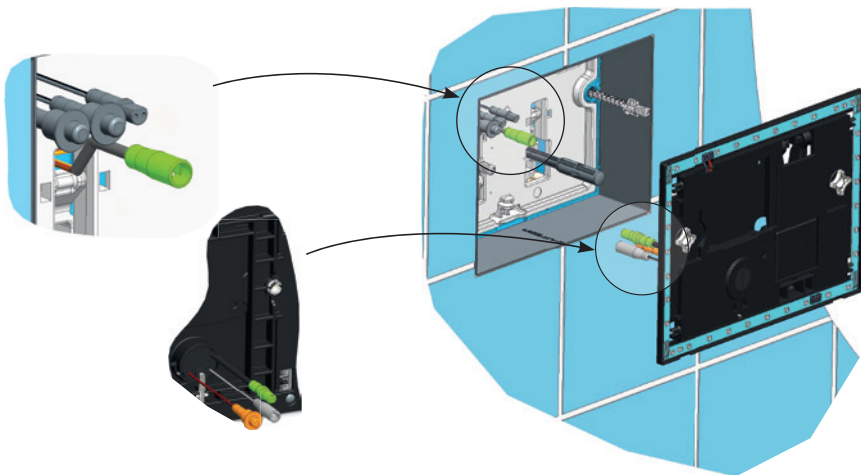


STEP 3

1

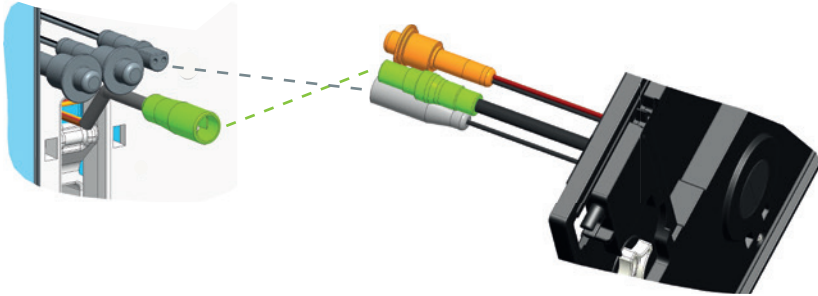


2

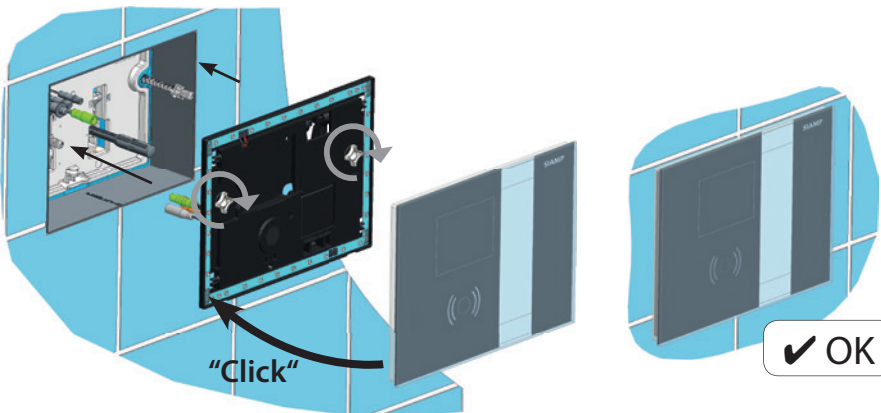
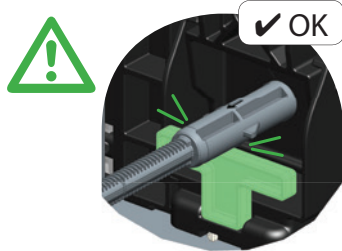


# VERSION B

3

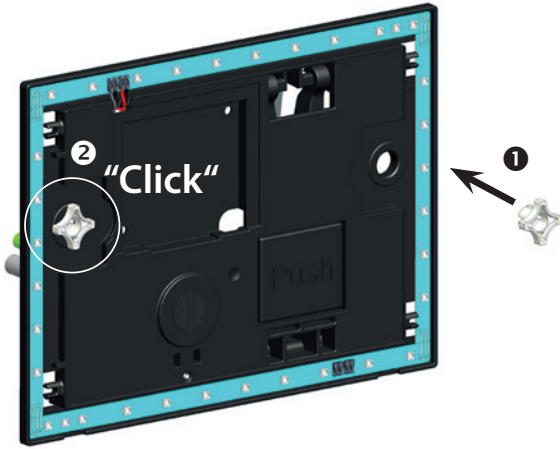


4

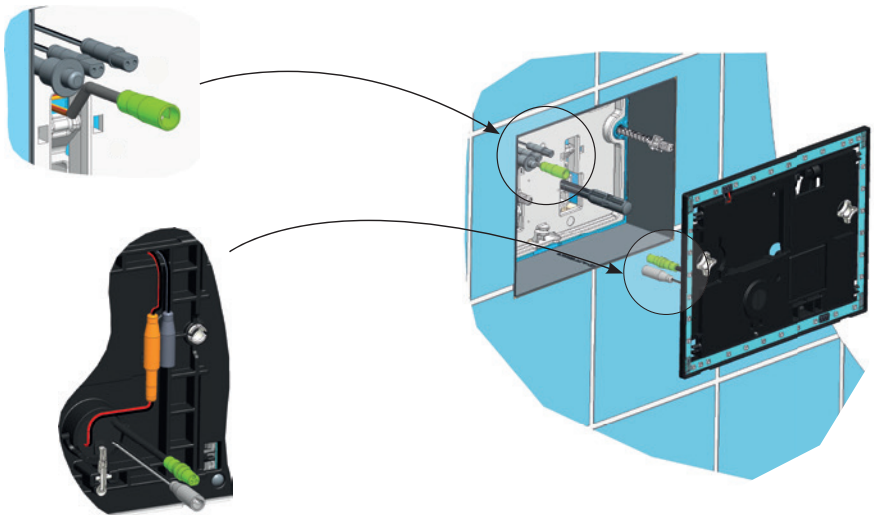


STEP 3 & 4

1

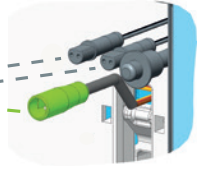
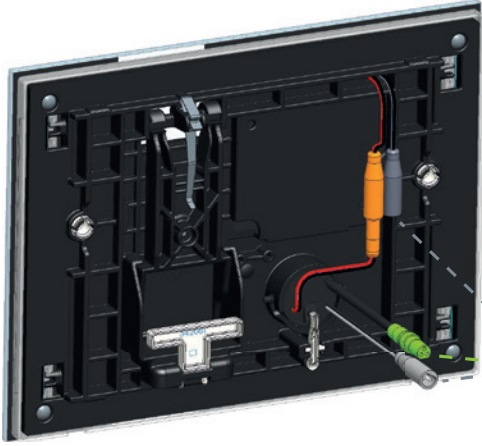
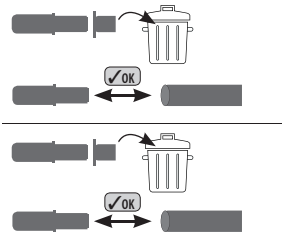
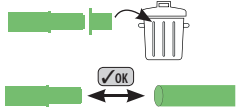


2

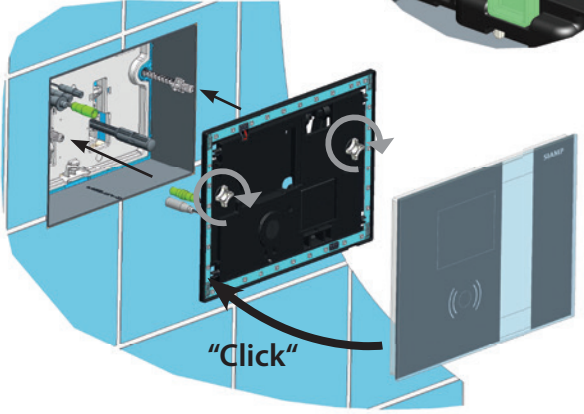
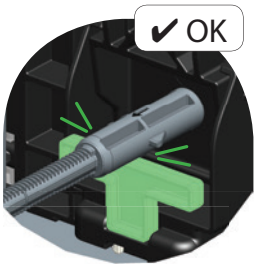


# VERSION C

3



4



STEP 3 & 4

TEST

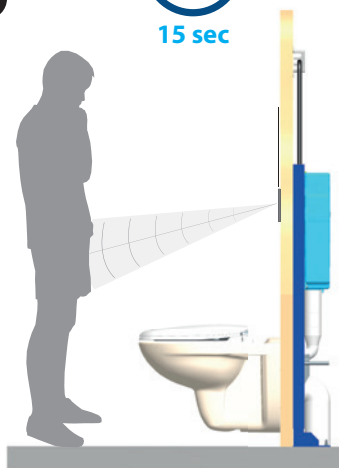


ON

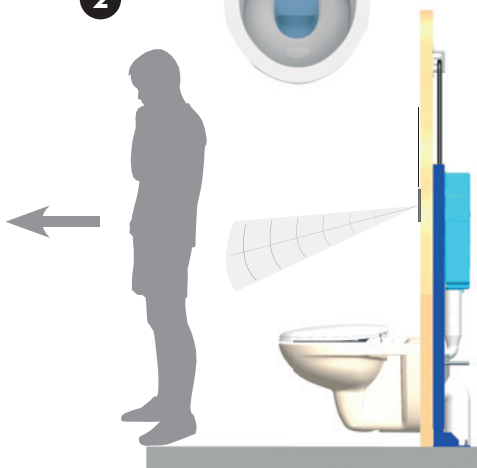
1



15 sec



2



# SIAMP

Monaco

4, quai Antoine 1<sup>er</sup> / B.P. 219  
MC 98007 MONACO Cedex

Tél. : +377 93 15 53 75  
Fax : +377 92 05 71 04

contact@siamp.com  
www.siamp.com

10 0033 37



# INGENIO

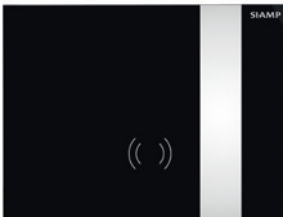
## PLAQUE DE COMMANDE À CHASSE AUTOMATIQUE

AUTOMATIC FLUSH PLATE

**A** ABS



**B** Verre / Glass



**C** Verre & LED / Glass & LED



## AVERTISSEMENTS / WARNINGS

- S'installe sur un réservoir Ingénio  
To be mounted onto Ingenio cistern
- ⚠ Les surfaces réfléchissantes (porte, miroir, paroi,...)  
ou les éclairages directs peuvent perturber le bon  
fonctionnement du capteur.  
Reflective surfaces or direct lighting can disturb  
the correct operation of the sensor
- Se munir d'un chronomètre  
Chronometer is needed

## SOMMAIRE / CONTENTS

**MODES UTILISATEURS / USERS MODES**

**AUTO DIAGNOSTIC / SELF-DIAGNOSTIC**

**REMISE À ZÉRO / RESET**

**ENTRETIEN / CLEANING**

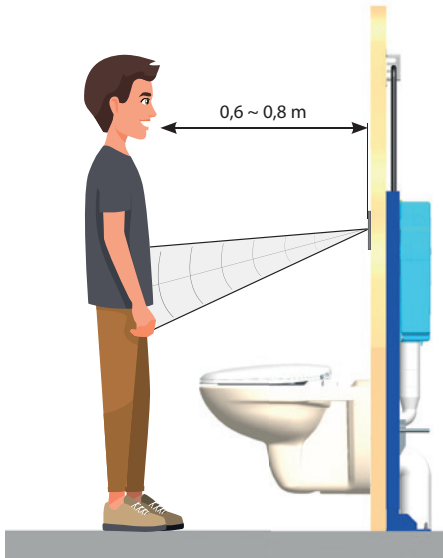
# MODES UTILISATEURS / USERS MODES

## CHASSE AUTOMATIQUE / AUTOMATIC FLUSH

1a



1b



=

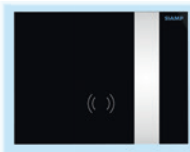
A ABS



B Verre / Glass



C Verre & LED / Glass & LED



# MODES UTILISATEURS / USERS MODES

2

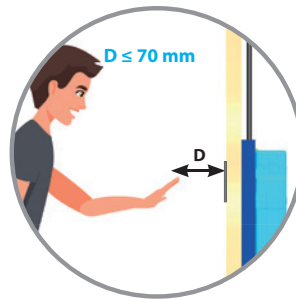


15 sec → 2 min = 3l

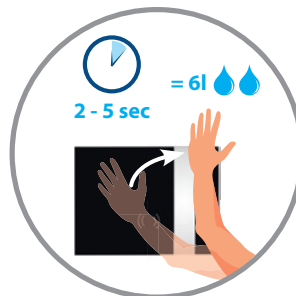
> 2 min = 6l



## CHASSE MANUELLE / HAND FLUSH



+



A ABS



B Verre / Glass



C Verre & LED  
/ Glass & LED



# MODES UTILISATEURS / USERS MODES

## CHANGEMENT DE COULEURS DES LEDS / LED COLOUR CHANGE

- 1** Entrer dans le mode  
Enter the mode



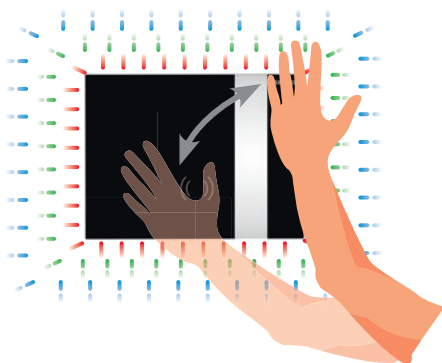
0 - 5 sec



- 2**



5 - 8 sec



- 3** Sortir du mode  
Leave the mode



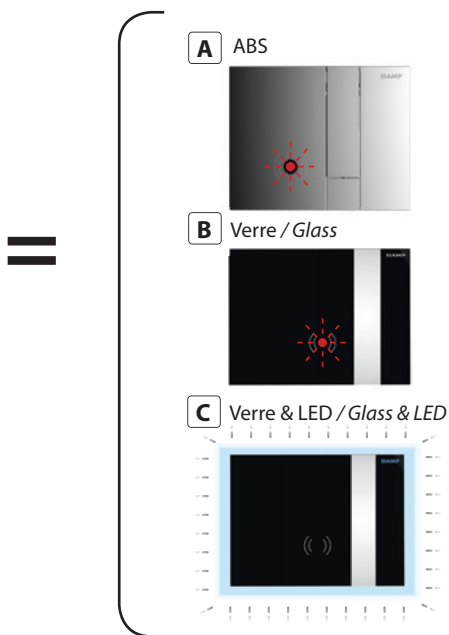
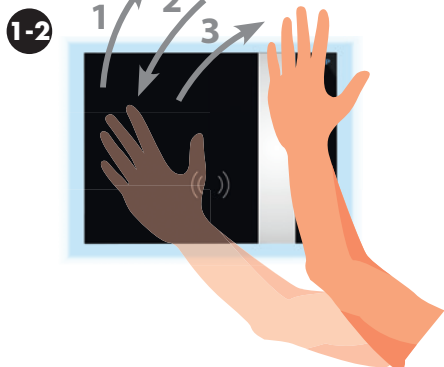
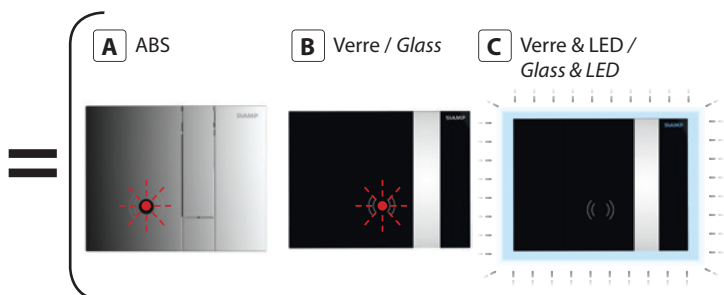
>10 sec



## NETTOYAGE - VEILLE / CLEANING - STAND-BY

**1** Entrer dans le mode  
Enter the mode

**1-1**   
8 - 11 sec



# MODES UTILISATEURS / USERS MODES

## NETTOYAGE - VEILLE / CLEANING - STAND-BY

3



8 sec → 5 min



STOP

4

Sortir du mode  
Leave the mode



4-a

> 5 min

✓ OK



Ou / Or

4-b

> 10 sec

✓ OK



5



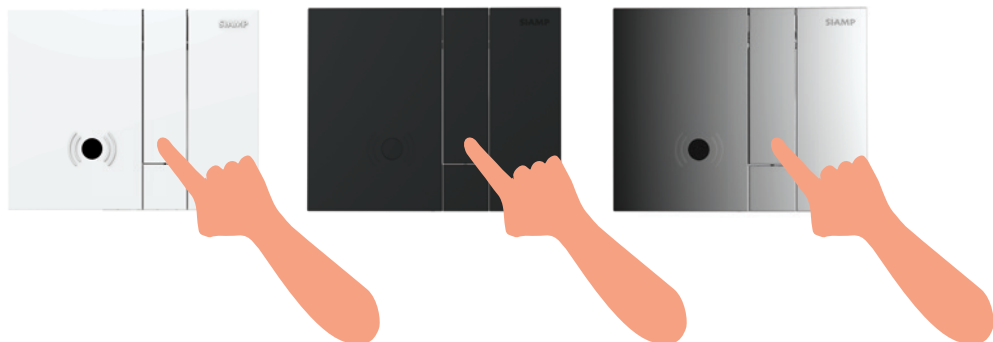
6l

## COUPURE DE COURANT / MAINS SHORTAGE



> 3 sec

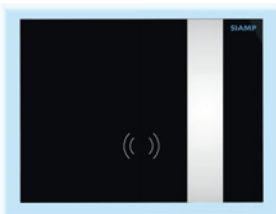
**A** ABS



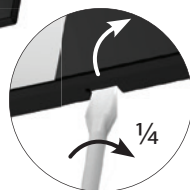
**B** Verre / Glass



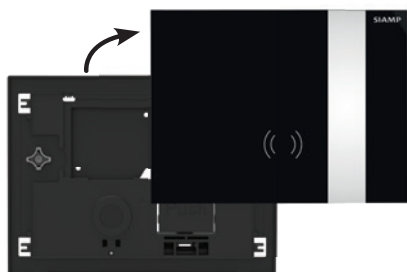
**B** Verre & LED / Glass & LED



**1**



**2**



**3**



> 3 sec



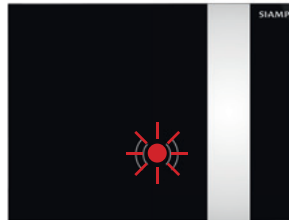




## ERREUR / FAILURE



**3 sec**  
**= ERREUR**  
**/ FAILURE**



- **ERREUR CAPTEUR / SENSOR FAILURE**

CODE 32

- **ERREUR DE COMMUNICATION / COMMUNICATION FAILURE**

CODE 21

- **ERREUR MOTEUR / ENGINE FAILURE**

CODE 22

## ERREUR CAPTEUR / SENSOR FAILURE

### CODE 32

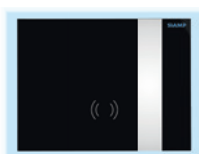
**A** ABS



**B** Verre / Glass



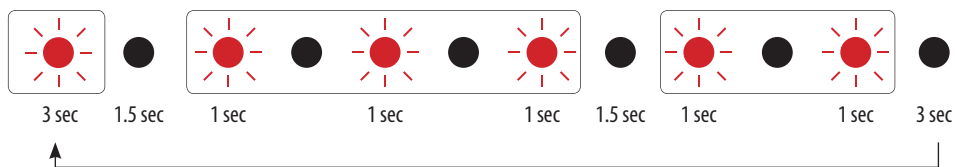
**C** Verre & LED / Glass & LED



**ERREUR / FAILURE**

**3**

**2**



### ACTION 1

**A** **B** **C** Toutes versions / All versions

**X**



**✓ OK**



**Le capteur ne doit pas être obstrué.**

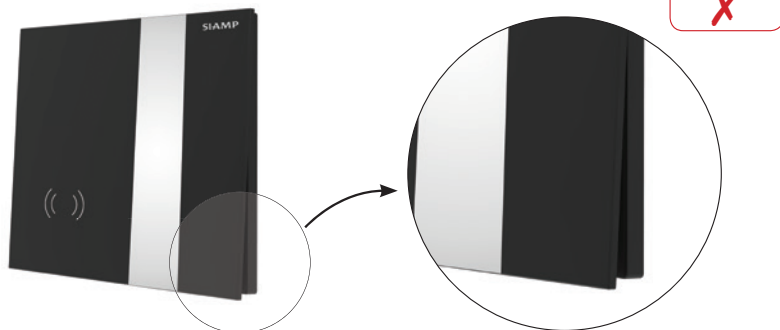
The sensor must not be obstructed.

# AUTO DIAGNOSTIC / SELF-DIAGNOSTIC

## ACTION 2

**B** **C** Verre / Glass + Verre & LED / Glass & LED

1



2



3



## ACTION 3

**A** ABS



*New*  
Code: 10 0051 07

**B** Verre / Glass



*New*  
Code: 10 0033 35

**C** Verre & LED / Glass & LED



*New*  
Code: 34 2900 19

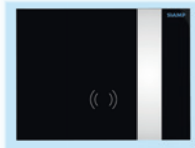
# AUTO DIAGNOSTIC / SELF-DIAGNOSTIC

## ERREUR DE COMMUNICATION / COMMUNICATION FAILURE CODE 21

**B** Verre / Glass



**C** Verre & LED / Glass & LED



ERREUR / FAILURE

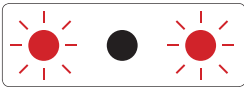
2

1



3 sec

1.5 sec



1 sec

1 sec

1.5 sec



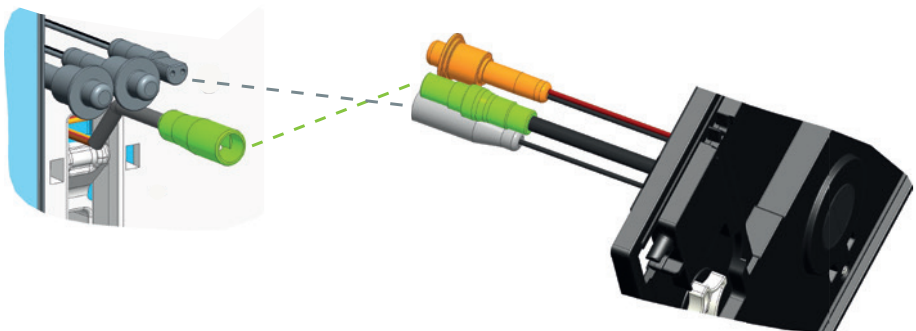
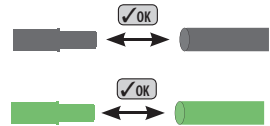
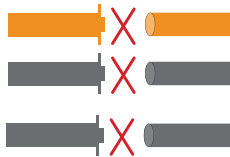
1 sec

3 sec



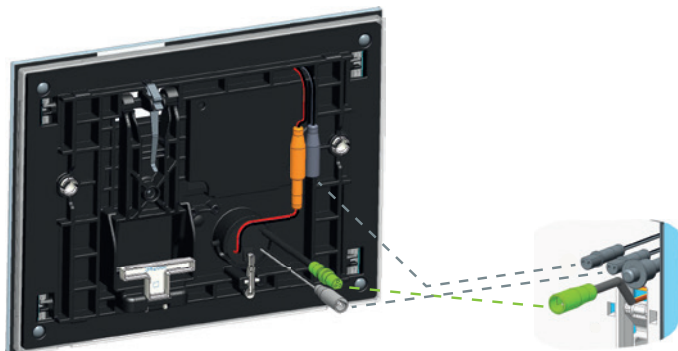
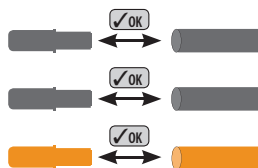
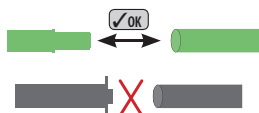
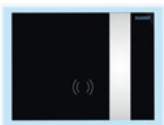
### ACTION 1

**B** Verre / Glass



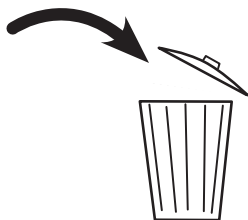
# AUTO DIAGNOSTIC / SELF-DIAGNOSTIC

**C** Verre & LED / Glass & LED

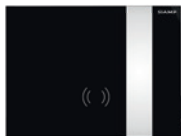


## ACTION 2

**1**



**2**



*New*  
Code: 10 0033 35

**B**

Verre / Glass



**2**



*New*  
Code: 34 2900 19

**C**

Verre & LED /  
Glass & LED



## ERREUR DE MOTEUR / ENGINE FAILURE

CODE 22

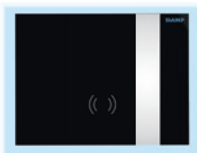
**A** ABS



**B** Verre / Glass



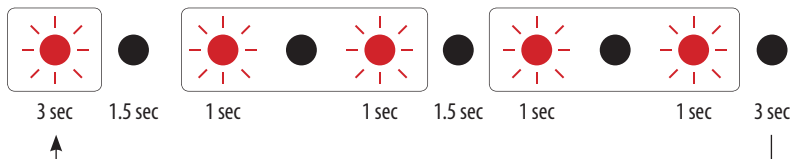
**C** Verre & LED / Glass & LED



ERREUR / FAILURE

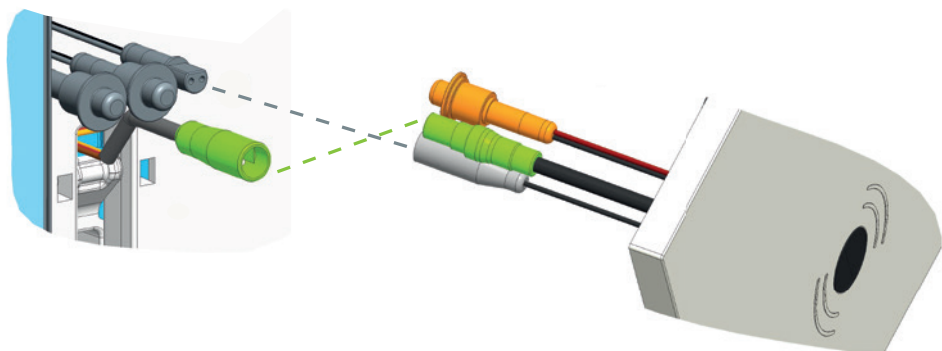
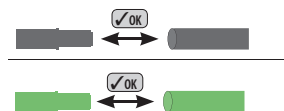
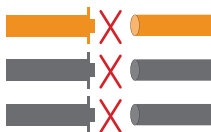
2

2



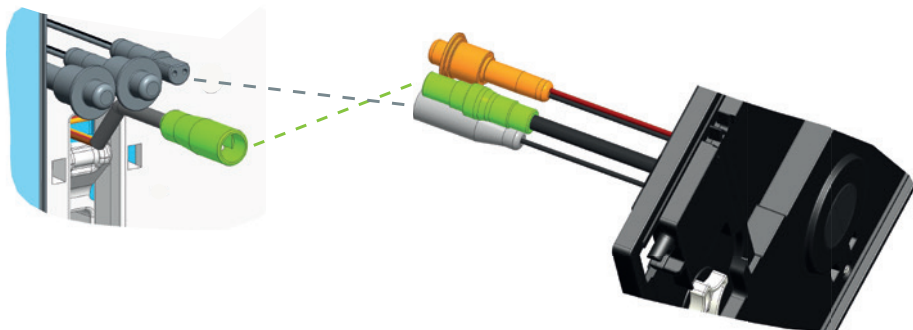
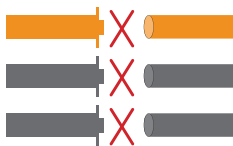
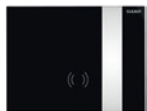
### ACTION 1

**A** ABS

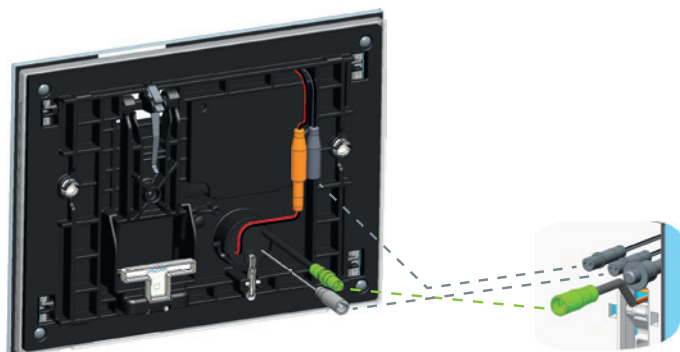
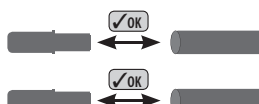
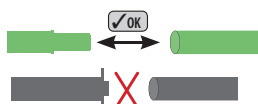
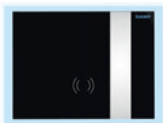


# AUTO DIAGNOSTIC / SELF-DIAGNOSTIC

## B Verre / Glass

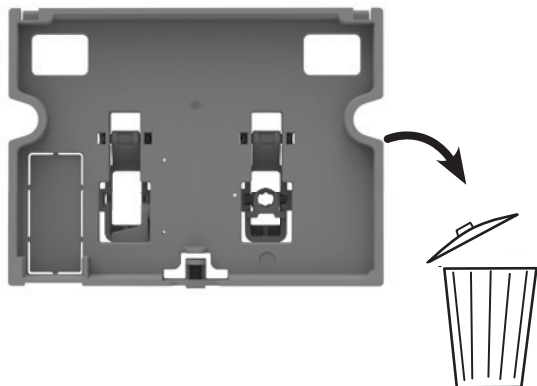


## C Verre & LED / Glass & LED



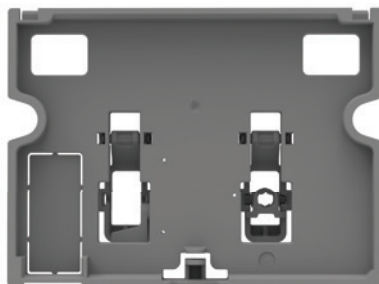
## ACTION 2

1



2

*New*  
Code: 34 2900 07



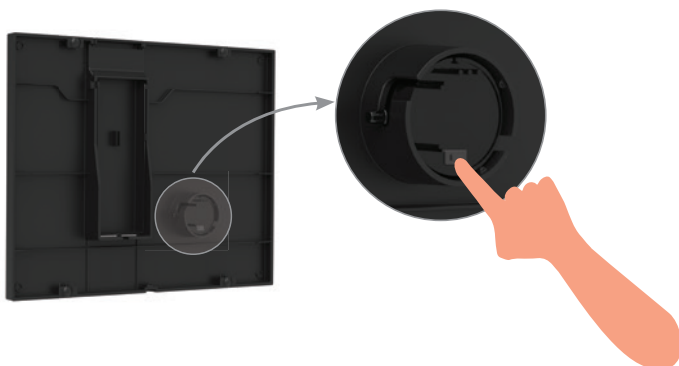


# REMISE À ZÉRO / RESET



30 sec  
= REMISE À ZÉRO / RESET

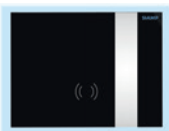
**A** ABS



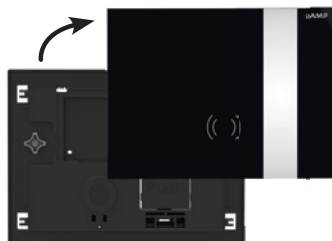
**B** Verre / Glass



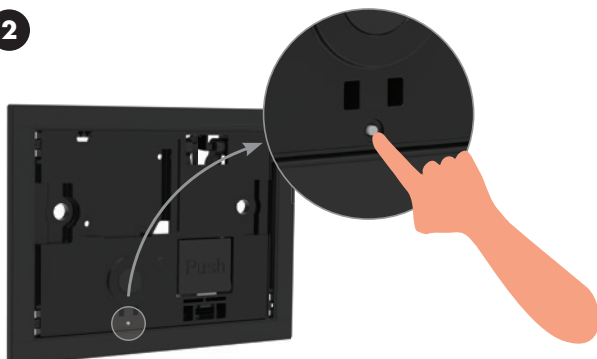
**C** Verre & LED / Glass & LED



**1**



**2**



- Ne pas nettoyer la partie interne de la plaque de verre hormis avec un chiffon doux.
- Ne pas utiliser de produit de nettoyage à base de chlore ou d'acide.
- Nettoyer la plaque de commande de chasse automatique avec de l'eau et des produits de nettoyage NON agressifs, NON abrasifs, NON corrosifs.
- Utiliser un chiffon doux.

- Do not clean glass pannel inner side except using a soft cloth.
- Do not use chlorine or acid cleaning agents.
- Clean the automatic flush control plate with water and NON aggressive, NON abrasive, NON corrosive cleaning products
- Use a soft cloth.

# SIAMP

---

Monaco

